

Sherilyn W. Poole, Ed.D.
 Associate Vice President for Student Affairs/Dean of Students
 and Chair, Campus Emergency Response Team

MHEC Loss Control Workshop
March 17-18, 2011

Mutual Aid:
A Bridge from Disaster to Recovery

I. SMHEC

- *Background
- *Membership Institutions
(62 miles north to south, Kankakee CC to IIT)
- *Goals/Focus
- *Work Committees

South Metropolitan Higher Education Consortium - Membership

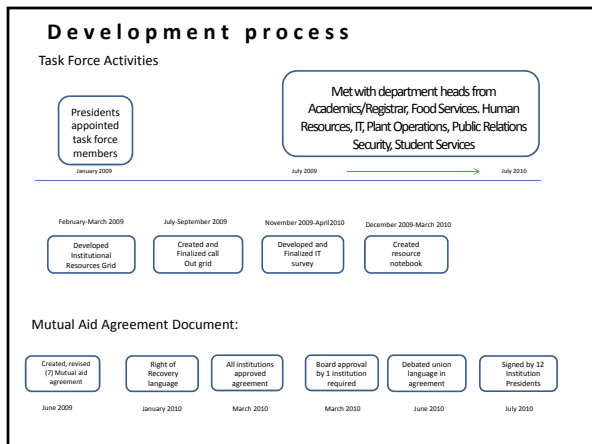
| | |
|-----------------------------|-----------------------------|
| <u>4 year institutions</u> | <u>2 year institutions</u> |
| DeVry University | Joliet Junior College |
| Governors State University | Kankakee Com. College |
| Illinois Institute of Tech. | Moraine Valley Com. College |
| Lewis University | Prairie State College |
| Saint Xavier University | South Suburban College |
| University of St. Francis | Northwestern College |

II. Mutual Aid Agreement

- *Motivation
- *Provide a window of time between the initial, immediate response and assessment of damage to allow the institution to continue operations
- *Components of the Agreement
 - Resources
 - No expectation of payment or reimbursement
 - Time commitment(s)

III. Development Process/Timeline

- * January 2009
(First meeting of Task Force)
- * March 2011
(Test of call-out system)



V. Test of the call-out procedures

- *Three days
(one for each of the dispatch centers)
- * All institutions received call for assistance; three institutions called in for assistance
- * Results of call-out test

How does mutual aid work?

1. Campus in need calls dispatch center; requests assistance and resources
2. Dispatch center alerts first level institutions; identifies aid and resources requested
3. Institutions send requested aid

Additional Task Force Activities

- *Sharing NIMS training
- *Opportunities to participate in drills at member institutions
- *Networking/Discussing best practices
- *Assistance in acquiring emergency radios

- VI. - Summary
- Questions

Contact

Sherilyn W. Poole, Ed.D.

Associate Vice President for Student Affairs/Dean of Students
and Chair, Emergency Response Team
Governors State University
spoole@govst.edu
