

Risk Management in the Performing Arts



Best Practices for Higher Education

Or
Everybody Wants to be Peter Pan

Mark Briggs, CSP, ARM
Safety Management Resources Corporation
Mark@**SafetyManagementResources.Com**



Lots of Ground to Cover

- What Are the Performing Arts?
- What Can Really Go Wrong Anyway?
- Risk Management Techniques
- Special Considerations
- Loss Control and Lessons From the Trenches
- Resources for Further Research



What are the Performing Arts?

- Subset of “The Arts”
- Performing arts include music, drama & dance
- Why are higher ed exposures different?
 - Academic mission along with public exposure
 - Student participants are by definition still learning
 - College students have really bad taste
- What goes on at your campus?
 - School-produced versus hired acts



Really, what could possibly go wrong?

- Student injuries
- Employee injuries
- Visitor injuries
- Fire
- Egress
- Security
- Reputational risk



Risk Management Techniques

- Contractual risk transfer

 - Standard agreement with producer/artist
(hopefully...sometimes)

 - Indemnity & insurance requirements

 - Waiver on back of tickets

 - Owned or leased venue?

 - Is this your act or theirs?



Risk Management Techniques

■ Insurance transfer

Master program versus special events

Special events –

Broker or online

Purchased by university or producer/artist

General liability (additional insureds)

Liquor liability

Property damage of others

Event cancellation

Damage to premises, extreme weather, strikes,
withdrawal of artist, no access...



Midwestern Higher
Education Compact



Risk Management Techniques

- Crisis planning
 - Medical, fire, crowd control
- Claims management
 - Incident reports, claimant follow-through
- Loss control
 - Involve everyone necessary



Special Considerations for Student Programs

- Someone must *always* be in charge
- Training, training, training
- Confirm competence
 - Leave the technical & construction to the experts
 - Drama students don't make the best engineers
- Dress rehearsals as soon as possible
- Housekeeping
- Deconstruction & disposal



Special Considerations with Hired Acts

- Avoid letting them shift liability for their negligence
- Consider special events coverage for the big ones
- Security
 - Inside, artist/producer, or contracted
- Setup
 - Inside, artist/producer, or contracted



Midwestern Higher
Education Compact



Personal Protective Equipment (PPE)

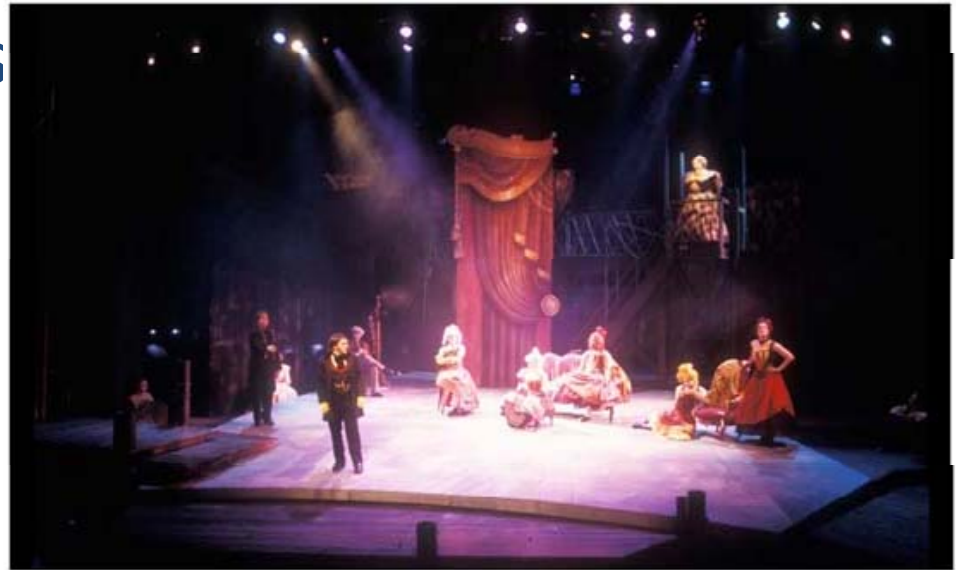
Evaluation, selection, training & use

- Hard Hats
- Gloves
- Safety Glasses/Eye Protection
- Fall Protection
- Respirators
- And potentially much more



Stage Rigging – Set-Up & Tear-Down

- Employee Safety
- Equipment – Lift Trucks, Cranes, Hoists
- Capacities – Calculations
- Securing of Equipment



MHEC

Midwestern Higher
Education Compact



Tool Safety

- Hand Tools

Choose the right tool for the job

- Power Tools

Training

Maintenance



Midwestern Higher
Education Compact



Ladders & Scaffolding

- Proper set-up and use
- Training
- “Competent Person”
- Access/Protection

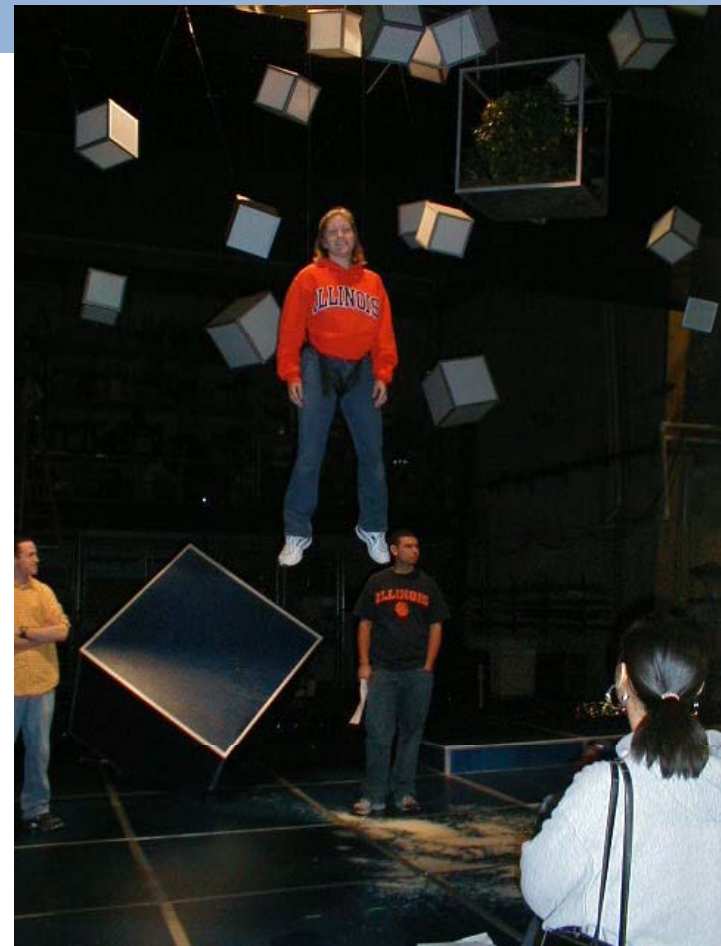


Midwestern Higher
Education Compact



Fall Protection

- “Flying” of actors
- Falls from stage
- Rigging
- “Simple” slips and falls



Midwestern Higher
Education Compact



Chemical Safety

Solvents, Paints, Dyes, Adhesives, Others

- Material Safety Data Sheets (MSDS)
- Flammable and Combustible Liquids
- Makeup



Midwestern Higher
Education Compact



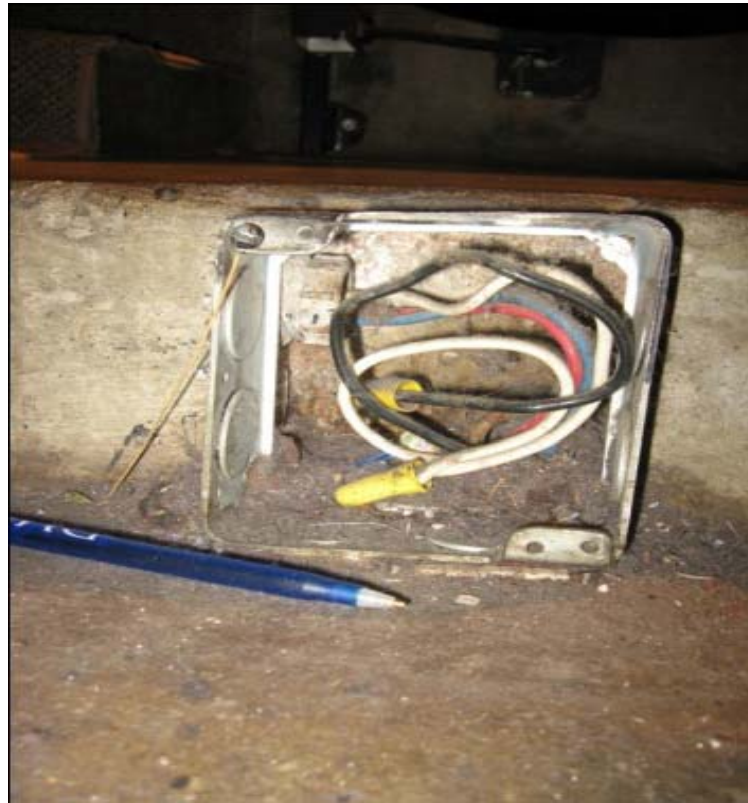
Fire Protection and Prevention

- Welding and Cutting
- Chemicals
- Open Flames
- Pyrotechnics
- Lighting
- Combustible Materials
 - Costumes and Sets



Electrical Safety

- Training
- Expertise
- Inspection
- Fire Safety
- Circuitry



Midwestern Higher
Education Compact



Fog and Smoke

- Inhalation
- Visibility
- Notifications/Alarms
- Emergencies



Midwestern Higher
Education Compact



Firearms and Weapons

- Proper Use
- Training
- Supervision
- Security
- Legal Issues



Personnel/Student Issues

- Training
- Fatigue
- Time Constraints
- Food Safety
- Competent Supervision



Midwestern Higher
Education Compact



Thank You!

Mark Briggs, CSP, ARM

Safety Management Resources Corporation
1314 Theodore Drive, Champaign, Illinois 61821

Mark@SafetyManagementResources.Com

217 840 0235

