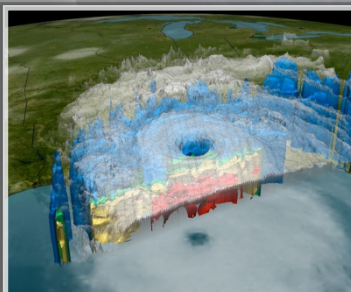
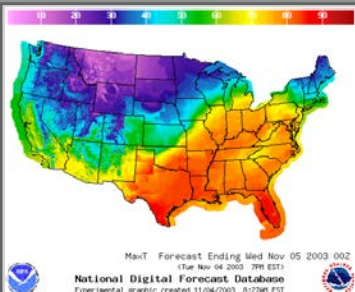
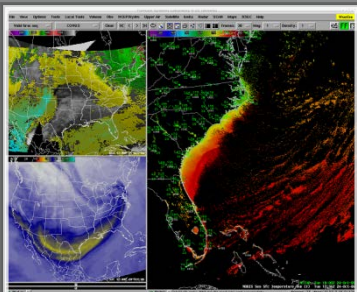


# Midwestern Higher Education Compact Preparing Colleges/Universities StormReady/Decision Support Services



**Jim Kramper**

**Warning Coordination Meteorologist**

**National Weather Service, St. Louis, MO**





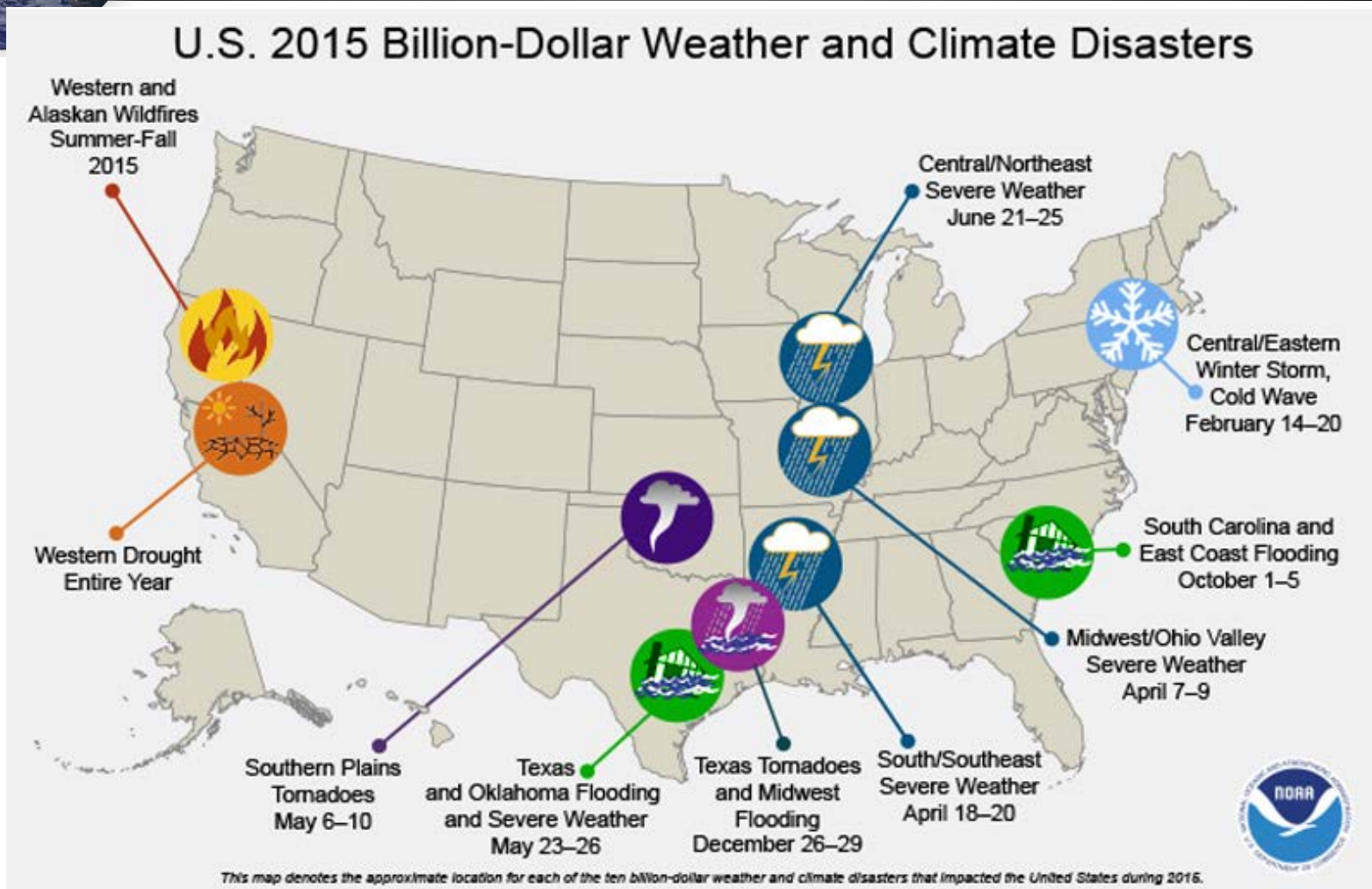
# Extreme Weather



**Weather-Ready Nation**



# The Many Disasters of 2015

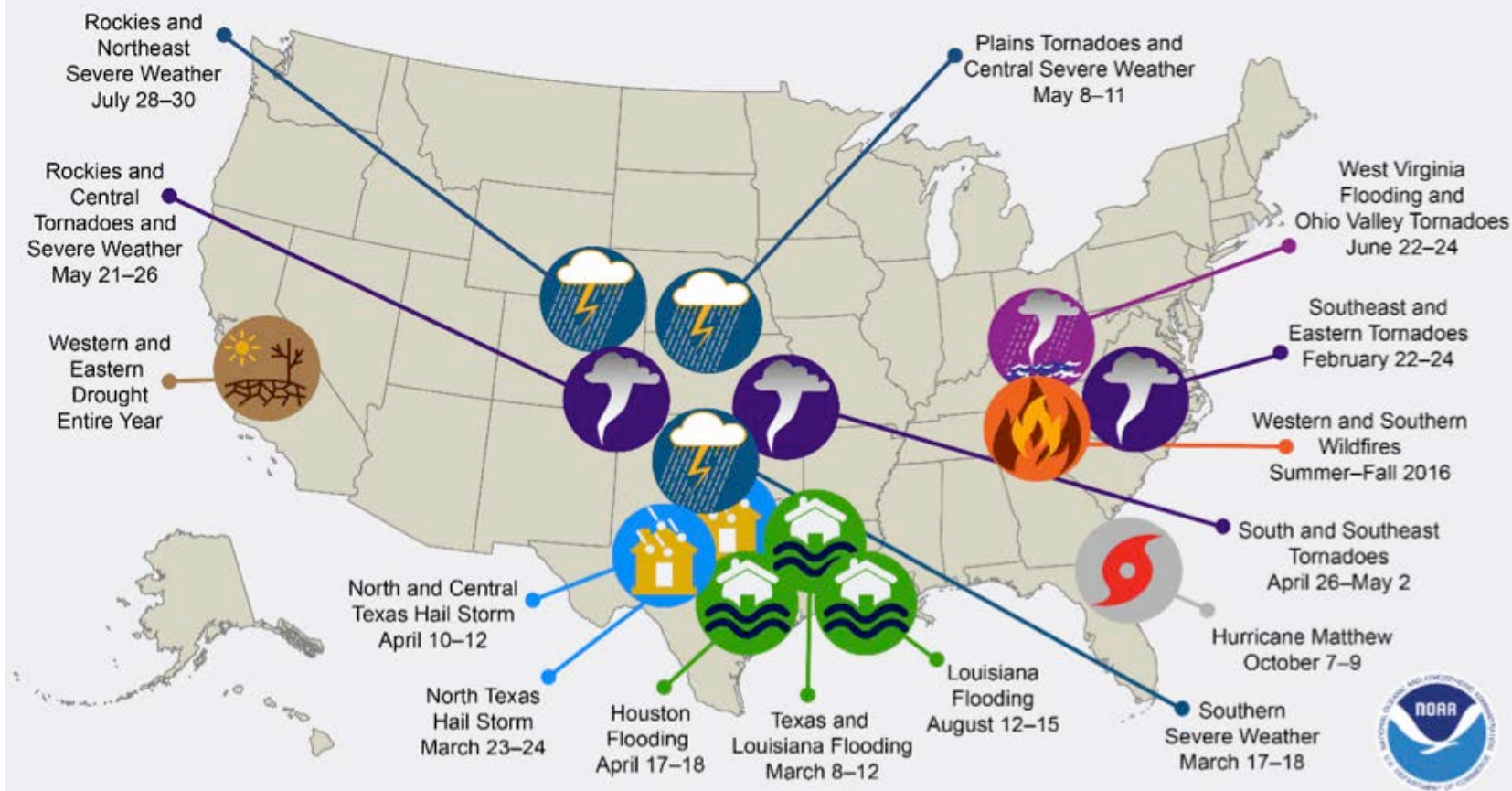






# The Many Disasters of 2016

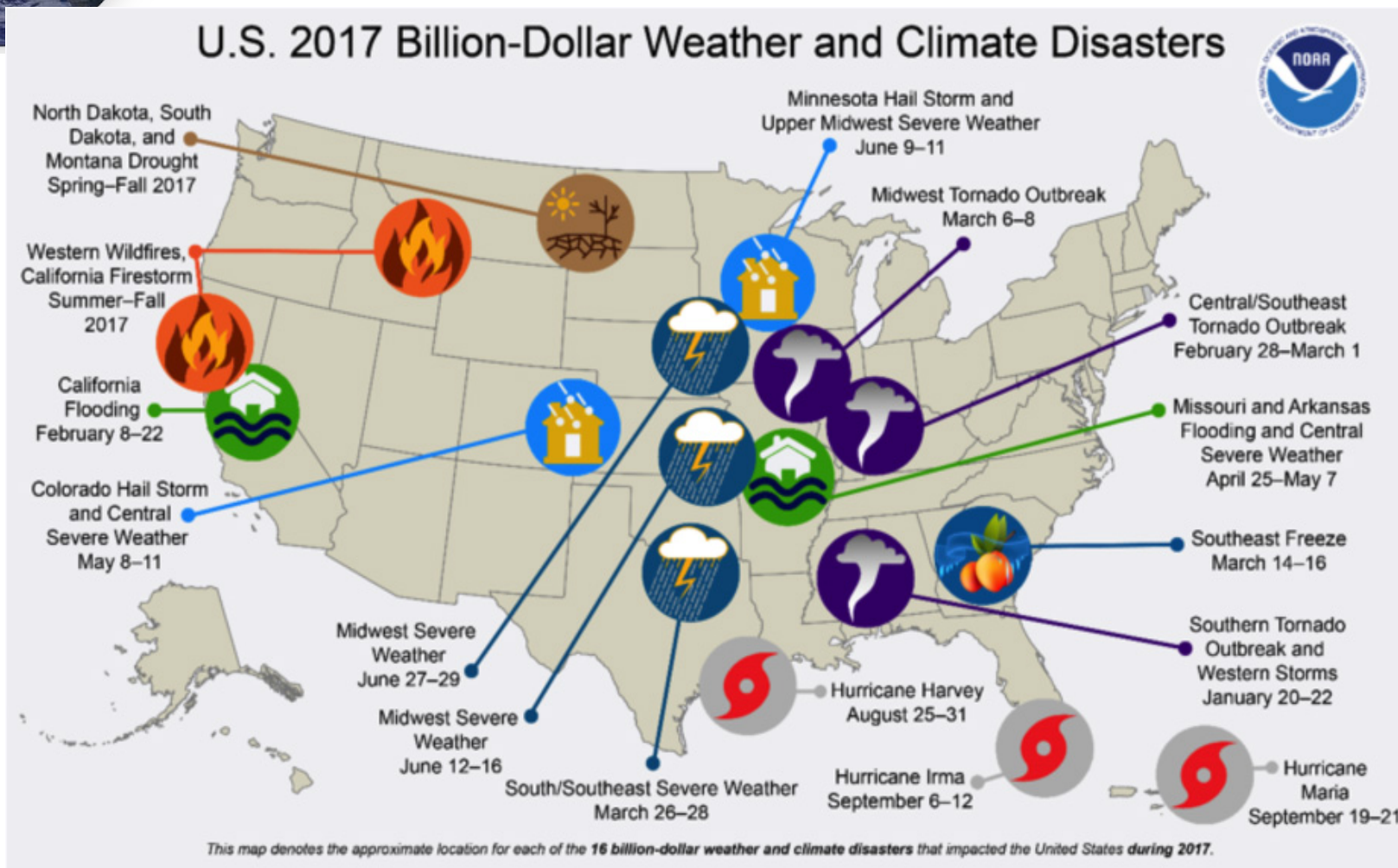
## U.S. 2016 Billion-Dollar Weather and Climate Disasters



This map denotes the approximate location for each of the 15 billion-dollar weather and climate disasters that have impacted the United States during 2016.



# The Many Disasters of 2017

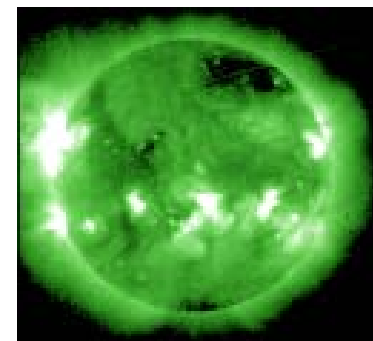
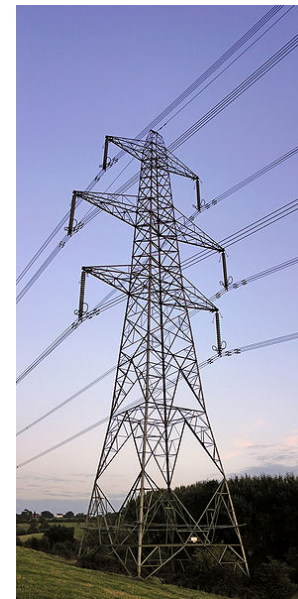






# Increasing Vulnerability

Becoming **Weather-Ready** is about building resilience in the face of increasing vulnerability to extreme weather.

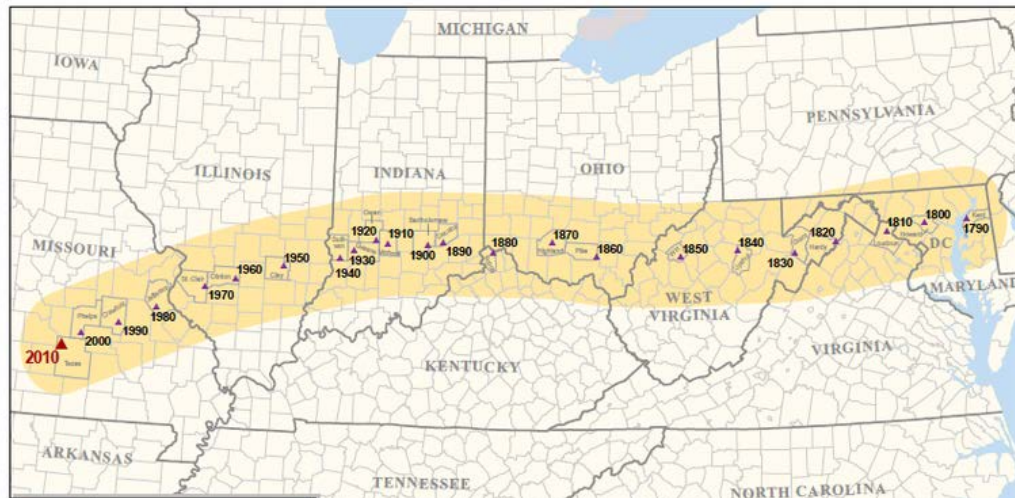




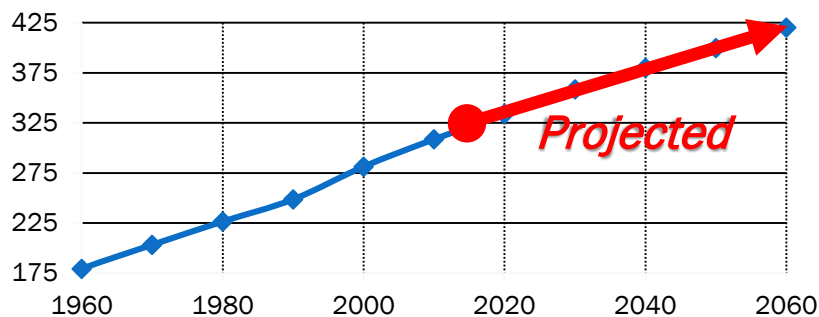
# A Changing World



Mean Center of Population for the United States: 1790 to 2010



U.S. Population (millions)







# Becoming Weather-Ready

- Preparation
  - Planning
  - Communication
  - Infrastructure
  - Training







# StormReady

- Developed in Mid 90s
- Joint effort: Emergency Management and NWS
- Framework
- Recognition





# StormReady: Key Parameters

- Warning Reception
  - NOAA Weather Radio
  - Television/Cable
  - Internet
  - Wireless







# StormReady: Key Parameters

- Communication/Relay of Warning
  - Public Address
  - Siren
  - Email/Text Blast
  - Video Boards





# StormReady: Key Parameters

- Hazardous Weather Response Plan
  - Print/Electronic
  - Available for Viewing







# StormReady: Key Parameters

- Sheltering Location
  - Review all buildings/facilities
  - Structural engineer





# StormReady: Key Parameters

- Preparedness
  - Annual Activity
    - Safety Fair
- Drills
- Distribute Safety Material







# StormReady

- Application
  - StormReady web site
- Contact your local NWS office
  - Warning Coordination Meteorologist (WCM)





# WRN Ambassadors Initiative

- ☑ We need partners' help in transforming society to become:
- ☑ *Ready, Responsive, and Resilient*
- ☑ A Weather-Ready Nation requires our entire society to improve the way it incorporates weather information into decision making.



• **SOCIETAL RESPONSE EQUAL TO RISK** •



# WRN Ambassadors Initiative

## What it takes to be a WRN Ambassador:

- Be an example
- Promote Weather-Ready Nation messages
- Provide incentives to constituents, stakeholders
- Share your success stories

**READY • RESPONSIVE • RESILIENT**







# WRN Ambassadors Initiative



World Wide Technology



Lewis County EMA



**READY • RESPONSIVE • RESILIENT**



**Weather-Ready Nation**



# WRN Ambassadors Initiative

Drury Hotels  
Costco  
General Dynamics  
Paramount Pictures  
Simon Property Group  
Federal Express  
Miami Dolphins  
Daytona International  
Speedway  
Ryder Cup



**READY • RESPONSIVE • RESILIENT**



**Weather-Ready Nation**



# WRN Ambassadors Initiative

Arkansas State  
Brigham Young  
Boise State  
Cornell University  
Gonzaga University  
Indiana University  
Kansas State  
Michigan State  
Oklahoma State  
Purdue University  
South Dakota State  
Syracuse University

University of:  
Florida  
Georgia  
Guam  
Kentucky  
Maine  
Missouri  
Michigan  
Nebraska  
Tennessee  
Texas  
Vermont



**READY • RESPONSIVE • RESILIENT**



**Weather-Ready Nation**





# Decision Support Service (DSS)

NWS will provide direct support for large, primarily outdoor events:

- Contact local office and request support
- NWS will provide a daily briefing (if requested) of the expected weather
- NWS will maintain a weather watch and call the POC if weather approaches

**READY • RESPONSIVE • RESILIENT**



# Decision Support Service (DSS)

NWS will provide direct support for large, primarily outdoor events:

- NWS will provide on-site support as requested

**READY • RESPONSIVE • RESILIENT**



# Midwest Higher Education Pact Preparing Colleges/Universities StormReady/Decision Support Services

Jim Kramper  
Warning Coordination Meteorologist  
National Weather Service, St. Louis, MO

[james.kramper@noaa.gov](mailto:james.kramper@noaa.gov)

weather.gov  
weather.gov/stlouis

