

SCOTT HANRATH, KENT MILLER, BETH M. WHITTAKER | KU LIBRARIES

RECOVERING LIBRARY SERVICES, SPACES, AND COLLECTIONS

KU THE UNIVERSITY OF
KANSAS



Kent Miller
Associate Dean of Libraries at KU

Beth M. Whittaker
Assistant Dean of Libraries at KU (Special Collections & Archives)

Scott Hanrath
Assistant Dean of Libraries at KU (Digital Initiatives & Discovery)



About KU Libraries

- 7 Libraries
- 5 Open-Stack structures
- 400,000 NASF
- 2,600 User Seats
- 325 Networked Work Stations



Spencer Research Library

- Rare books and manuscripts
- 24 hour security
- Electronic locks
- Secured collection and staff area
- Environmental monitoring
- Fire detection without sprinkling

Library Annex

- 3 Million volume hi-bay repository. Very dense storage of material by size and limited air exchanges mitigates against fire/water risk
- Paper collection maintained at 30% RH and 50° Fahrenheit
- Film vault maintained at 30% RH and 30° Fahrenheit
- High security sprinkled and alarmed
- Constructed to withstand an F-3 tornado



Collection Trends

Collections in 2000

- 3.8 Million Volumes (paper)
- 0 E-books

Collections in 2017

- 5 Million Volumes (paper)
- 1 Million E-books

Collections Expenditures

Year	Total Exp.	Books	Ongoing Purchases	E-Books
2000	\$6.8 M	\$1.8 M	4.3 M	0
2017	\$ 10 M	\$1.9 M	7.7 M	1 M



Collections Expenditures

2000: most ongoing purchases were journals in paper.

2017: most ongoing purchases were journals in electronic formats.



KU Libraries Insurance Coverage

- \$340,000,000 Collections
- \$140,000,000 Buildings
Watson, Anschutz, Spencer,
Annex
- \$500,000,000 /15% of KU
Lawrence Insurance Values



Risks: Water, Fire, Wind

Collections

- Loss of access to a portion of the 5 Million volumes
- Fire can represent total loss, water and wind represent risks from which recovery is possible

Space

- Loss of study seats, work stations, classrooms, service points
- Greater reliance on electronic materials brings greater reliance on technology

Ways KU Libraries Mitigate Loss

- Distribution of collection among several sites
- Disaster planning and collection prioritization
- Collections emergency planning & team
- Environmental controls: Spencer Library and Library Annex
- Fire prevention efforts
- Transfer of materials to the Library Annex where risks such as fire, water and wind damage are minimized

Case study



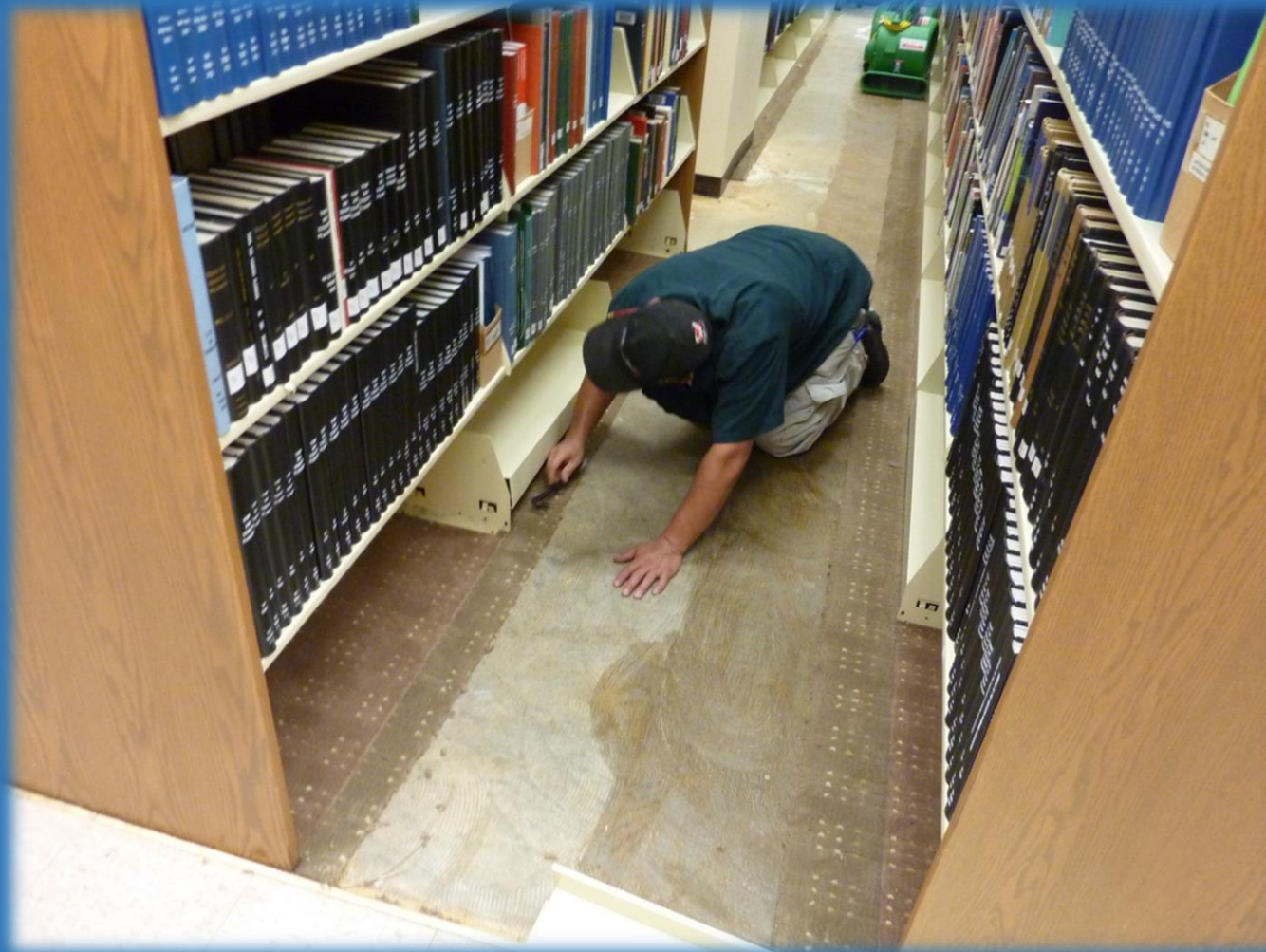
Loading truck



Dehumidification



All carpeting and tile removed



Major renovation



Disaster Preparedness

4 Cs of Disasters



Call for help

Channel water
from collections

Cover shelves
with plastic

Carry material
to safe location

University of Kansas Conservation Services



Recovery: Special Collections & Archives

- Possibly replaceable
 - Books
 - Journals
 - Newspaper, etc.
- Probably irreplaceable
 - Manuscripts
 - Most photographs
 - Scrapbooks
 - Letters





SEBA, Albert (1665-1736).

Locupletissimi rerum naturalium
thesauri accurata descriptio et iconibus
artificiosissimis expressio, per universam
physices historiam. Amsterdam: J.
Wetsteen, William Smith, and
Janssonius van Waesberge (vol. 1 and
2), Janssonius van Waesberg (vol. 3),
and H.C. Arksteus, H. Merkus and
Petrus Schouten (vol. 4), 1734-1765.

—
Price realised ⓘ
GBP 50,900

LOCUPLETISSIMI
RERUM
NATURALIUM
THESAURI
ACCURATA DESCRIPTIO,
ET
ICONIBUS ARTIFICIOSISSIMIS
EXPRESSIO,
PER
UNIVERSAM PHYSICES HISTORIAM.
OPUS.

CUI, IN HOC RERUM GENERE, NULLUM PAR EXSTITIT.
EX TOTO TERRARUM ORBE COLLEGIT,
DIGESSIT, DESCRIPSIT, ET DEPINGENDUM CURAVIT

ALBERTUS SEBA,

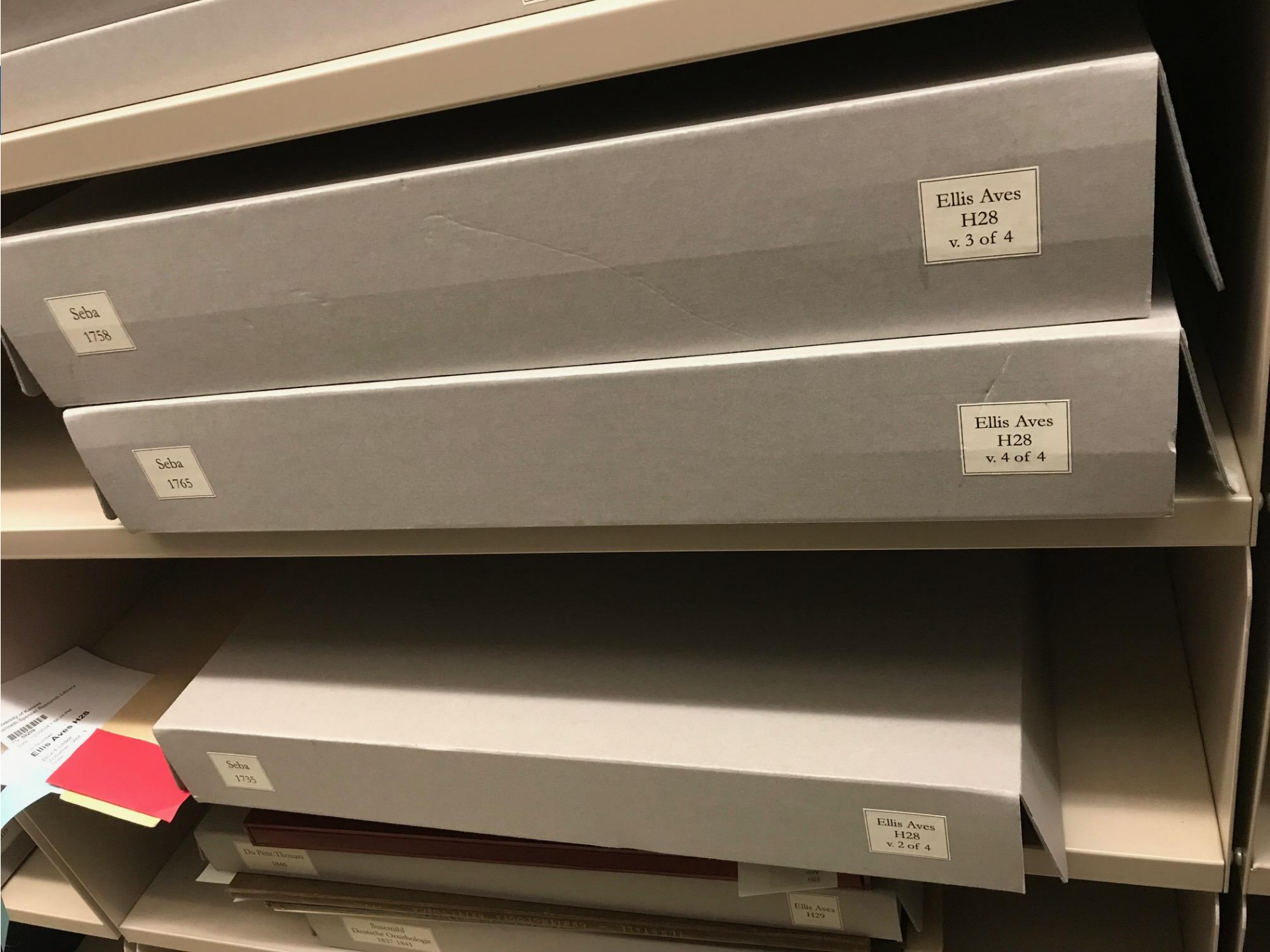
ETZELA OOSTERISIUS,
ACADEMIAE CAESARAE LEOPOLDINAE CAROLINAE NATURAE CURIOSORUM
COLLEGA XENOCRATES DICTUS, SOCIETATIS REGIAE ANGLICANAE,
ET INSTITUTI BONONIENSIS, SODALIS.

TOMUS II.



AMSTELÆDAMI,
Apud J. WETSTENIUM; & GUL. SMITH,
& JANSONIO-WAESBERGIOS.
MDCCXXXV.







Different collections
pose different challenges



KU THE UNIVERSITY OF
KANSAS



Recovery: Digital

Two types of digital resources:

- Licensed subscription resources
- Local “unique” digital content



Recovery: Digital

Licensed subscription resources:

- Journal subscriptions, e-books
- Externally hosted
- Libraries facilitate access
 - IP-based authentication
 - Proxy server, KU identity management system



Recovery: Digital

Local digital resources:

- Digitized collections
- Born-digital assets (e.g., theses and dissertations)

This is to certify that we, the undersigned Insurance Agents have examined Fire Ins. Map of this city, and find same correct in all particulars, and cheerfully recommend its adoption by all Insurance Cos doing business here.

A. E. Schleg
Yps O. Bawell
Gleason Whitman
John Charlton
Chairs Cairns
A. Hooper
C. L. Edwards

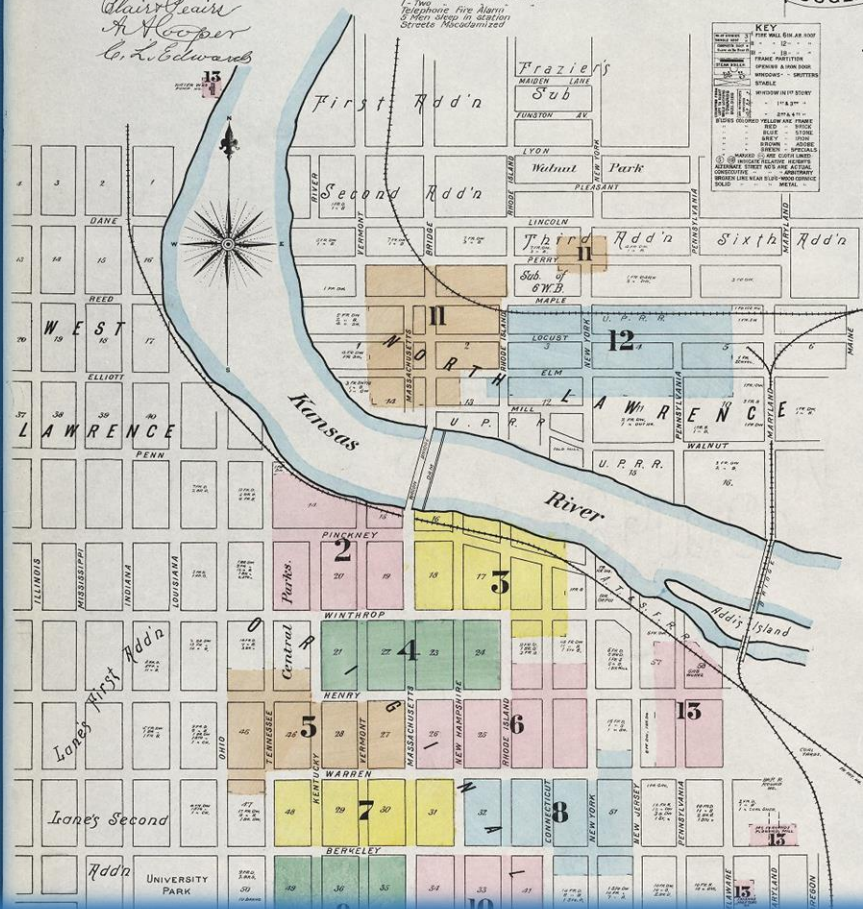
Prevailed Winds S & SW

WATER FACILITIES

WATER FACILITIES
Scarp Pipe is a Direct Pressure System, stands Pipe 105 ft. in dia., situated on Hill 300 ft. above Pumping Station and 165 ft. above Massachusetts St., at Post Office. Pump No. 1 situated 1 1/2 Miles N.W. of Post Office on bank of Kansas River. Water from Kansas River is pumped into Pumping Station. Washington Fire Pump. Capacity 1 1/2 Million Galls. each. Water pumped from Kansas River. Average Pressure 105 lbs. per square inch. Pressure 100 to 200 lbs. per square inch at Pumping Station. 100 to 200 lbs. per square inch at Hydrants. (Underground) 16" suction pipe at Pumping Station. - Have Settling Basin.

FIRE DEPARTMENT

DEPARTMENT
14 Men including Chief, 2 Fully Paid Men, Horses
1 - Four Wheel Indep. Hose Cart
1 - Hook & Ladder Truck
2500 ft. of good hose
1 - Atmosphere Steamer
1 - Four Wheel Hand Hose Cart.
1 - Two
Telephone Fire Alarm
5 Men sleep in station
Streets Macadamized



LAWRENCE
 Kansas

PUBLISHED BY
C. J. P.

**Sanborn
Map & Publishing
Co. Limited**

117 BROADWAY NEW YORK

Scale 50 ft to an Inch

Sept. 1889

INDEX.

[illegible]

Dissertations

Recent Submissions



The Best Subset In Validation Algorithm: Testing Political Scientific Theory Via Predictive Analytics

Rogers, Benjamin Joseph (University of Kansas, 2017-08-31)

The difficulties arising from using statistical significance to demonstrate the truth and utility of a hypothesis have been known for some time (Cohen 1994). To develop a more rigorous conception of substantive significance, ...



Using Fluorescence Derivatization and Analytical Separations to Investigate Biomarkers of Oxidative Stress

Hogard, Michael Logan Dobson (University of Kansas, 2017-08-31)

Oxidative stress occurs when there is an overproduction of reactive nitrogen and oxygen species in the body. This condition has been linked to many prominent diseases. This thesis details analytical methods that use ...



Stress, Coping, Occupational Attitudes, and Burnout Among Mental Health Practitioners

Unpublished Doctoral Dissertation, University of Kansas, 2017-08-31



- ☒ Search KU ScholarWorks
- ☐ This Collection

BROWSE

All of KU ScholarWorks

Communities & Collections

This Collection

DISCOVER

Author

Gillette, Brandon (2)

Singh, Gurpreet (2)

Varona, Federico (2)

Zhang, Liang (2)

A, Gulinna (1)

View More



Recovery: Digital

- Backup
- Digital Preservation

[Home](#)[About](#)[Members](#)[News & Events](#)[Contact](#)

Preserving the **scholarly record** for this and future generations.

Learn more about our Network



Member Resources: [Legal Docs »](#) | [Deposit Assets »](#) | [Workflow Curriculum »](#)

What would we do differently in the event of catastrophic loss?

1. Significantly expand access to the e-collections
2. Attempt to rebuild the book collection
acquired in the last decade
3. Seek to recover as much of the damaged
collections possible
4. Not attempt to reassemble collections
acquired over the past 150 years- most
materials not available
5. Work collaboratively with other research
libraries to secure materials needed for our
community



An aerial photograph of the University of Kansas campus, featuring various academic buildings, green spaces, and a prominent clock tower. A thick red diagonal stripe runs from the top left towards the bottom right, partially obscuring the campus view.

*Thank
You*

Questions?

KU THE UNIVERSITY OF
KANSAS