



2018-2019

ANNUAL REPORT

to the Member States



FROM THE PRESIDENT & CHAIR



SUSAN G. HEEGAARD



KEN SAUER

We are grateful to all of you and to the MHEC staff, who have been supportive, frank, patient, and very helpful during this first year of leadership transition, which has gone so smoothly. You all have helped build a strong foundation here at MHEC and we are fortunate to work with such a talented and committed community.

There are similarities and differences among the four regional compacts, but as Midwesterners we believe MHEC is unique because of our history, culture, and can-do attitude. We are committed to working with you to identify how we can best serve, support, and add value to each of

our states and our many institutions and to the people who choose to live and work in the Midwest.

Late last year, we hired Academic Search to conduct an environmental scan of MHEC, to gauge how the Compact is perceived and valued. The scan's findings also informed our work with HCM Strategists, a public policy focused firm that provides strategic guidance to help groups like ours advance organizational success. During the MHEC Annual Commission Meeting, HCM Strategists led an interactive session with commissioners to hone our messaging and vision for the future, and to identify clear, actionable steps consistent with that vision and our current strategic plan. Thanks to all who participated in that session and to those of you who provided valuable additional feedback via interviews and surveys. We expanded and deepened relationships with other organizations like the State Higher Education Executive Officers Association (SHEEO) and Higher Learning Commission (HLC). And, we've strengthened relationships with our sister compacts, the New England Board of Higher Education (NEBHE), the Southern Regional Education Board (SREB), and the Western Interstate Commission for Higher Education (WICHE).

This past June, the Executive Committee established the Ad Hoc Governance Committee and the Finance and Audit Committee to provide additional structure, clarity, and accountability to the Compact's work. We are grateful to the commissioners who agreed to serve on these two committees and who generously share their time and wise counsel.

Thanks to the incredible contributions of our staff, committee members, and commissioners, MHEC is in good financial shape, with a healthy mix of revenue from our member states, contracts, and programs, as well as growing philanthropic support. We look forward to what's next.

Sincerely,

A handwritten signature in black ink that reads "Susan G. Heegaard".

Susan G. Heegaard
MHEC President

A handwritten signature in black ink that reads "Ken Sauer".

Ken Sauer
MHEC Chair, 2018-2019
Sr. Assoc. Commissioner and Chief Academic Officer
Indiana Commission for Higher Education

UNDERSTANDING THE COMPACT

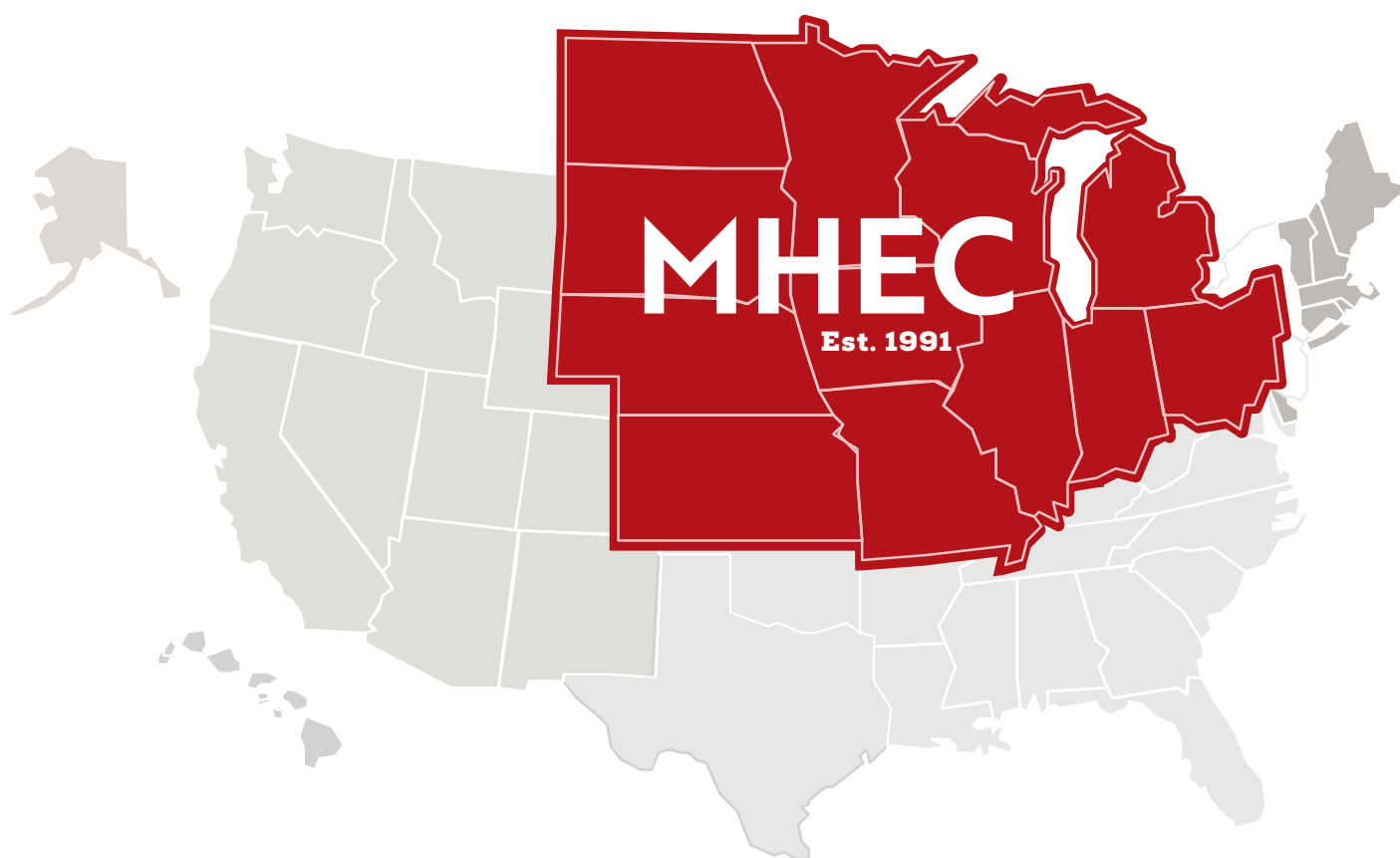
Created in the early **1990s**, the Midwestern Higher Education Compact was established through the enactment of legislation recommended by the Midwestern Legislative Conference of The Council of State Governments and is funded by member state commitments, program income, and foundation grants.

All **12** eligible Midwestern states defined by the Compact have passed legislation to become members. The states are closely aligned to the Midwestern Legislative Conference region.

The **CONVENINGS, PROGRAMS, CONTRACTS**, and **RESEARCH** originating through the Compact are available to all public and private nonprofit institutions of higher education in the Midwest. When the opportunity emerges, MHEC also extends some contracts to K-12 districts and schools, cities, states, and local governments.

Uniquely governed by a **60**-member commission of legislators, governors' representatives, and higher education leaders, two of the Compact's commissioners are appointed by each state's legislature and three are generally appointed by each state's governor. Representation also includes **21** commissioner alternates.

The entire commission meets annually and the commission's Executive Committee meets semiannually. Meeting locations rotate among the member states.



*North Dakota and South Dakota are members of both MHEC and the Western Interstate Commission for Higher Education (WICHE).

CONVENING

MHEC's ability to **CONVENE** empowers the member states to connect for the purpose of exchanging expertise, sharing ideas and experiences, and collaboratively pursue efforts that help further higher education. This convening and collaborating leads to many programs and activities that produce a variety of outcomes and results ranging from the dissemination of knowledge and expertise about practical solutions, to leveraging the collective purchasing power of the region to achieve efficiencies and savings. MHEC covers the cost of these meetings, for commissioners and committee members, including the travel expenses of participating attendees, so states and institutions do not have to use travel funds to participate.

COMMISSION MEETING AND POLICY FORUM

Twice a year MHEC convenes its governing body to conduct Commission business, learn about what is happening in the other MHEC states, showcase higher education related state and regional success stories, hear presentations on the ever-changing higher education landscape, and exchange best practices on higher education issues facing the Midwest. A policy focus on pressing issues featuring experts and their presentations is a part of the annual meeting. Along with the MHEC Commissioners, MHEC invites other legislators and higher education leaders from the region to attend.

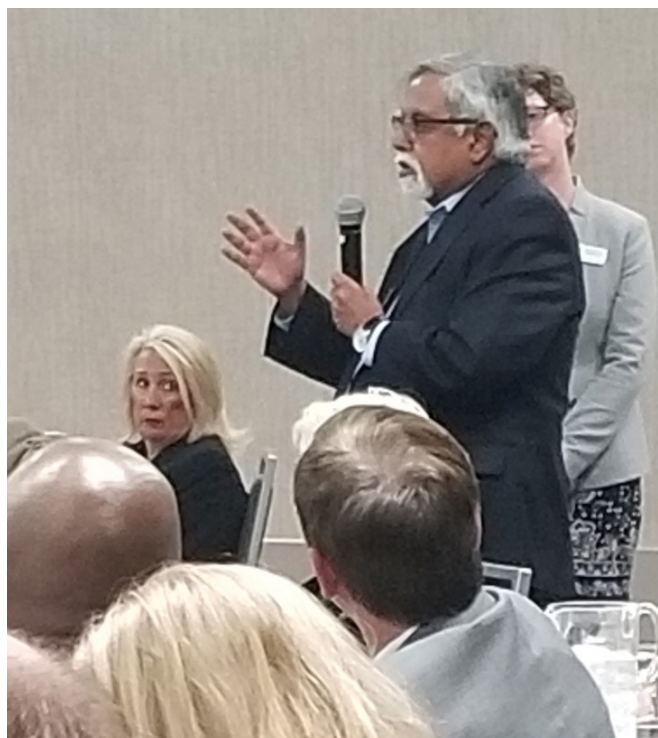
ANNUAL STATE VISITS

At least once a year the MHEC staff visit each member state of the Compact typically in the state capitol city, to hold a meeting with that state's commissioners. Key legislative leaders, as well as state higher education officials are also invited to attend these meetings. During these meetings staff reports on MHEC activities taking place in each state, listens to ideas and concerns, and shares ways to better leverage MHEC.

ADVISORY COMMITTEES CONVENE

MHEC brings together committees of practitioners and subject-matter experts to share knowledge and expertise on issues facing higher education while

brainstorming on ways to collaboratively address these issues. MHEC relies upon these committees to continually improve and evaluate programs and contracts while enabling members to problem solve with similarly situated thought leaders in their field. Over the past year MHEC hosted colleagues from around the region for the Technologies Committee Annual Meeting, the Master Property Program's Loss Control Workshop, the MCMC Annual Meeting, and the Midwestern-State Authorization Reciprocity Agreement Annual Meeting.



POLICY INITIATIVES

CONCURRENT ENROLLMENT

Concurrent enrollment (also referred to as dual enrollment) provides high school students the opportunity to take college credit-bearing courses.

MHEC brought together member states to develop a collective voice to address the Higher Learning Commission's (HLC) relatively recent guidelines on more stringent faculty qualifications. The change has presented the greatest challenge for states with student access issues.

CONCURRENT ENROLLMENT HIGHLIGHTS

- MHEC continues to work with stakeholders and HLC to find common ground and practical resolution to this challenge. State-level stakeholders have shared that most do not believe they will be able to meet the 2022 HLC deadline for all concurrent enrollment instructors to be fully credentialed at the new levels.

NEXT STEPS

Regional and National Conversations. MHEC staff remain involved in regional and national concurrent enrollment conversations.

Advisory Groups. MHEC has created three advisory groups to address different aspects of the challenge that the changes present. Sources of external funding are being sought to support this initiative.

Thought Paper. MHEC staff are developing a thought paper that showcases innovative ways institutions are responding to the need for more fully credentialed concurrent enrollment instructors. It is anticipated that this paper will appear on the HLC website and be introduced at the HLC Annual Conference in spring 2020.

MULTI-STATE COLLABORATIVE ON MILITARY CREDIT

The mission of the Multi-State Collaborative on Military Credit (MCMC) is to facilitate an interstate partnership of the 12 Midwestern Higher Education Compact (MHEC) states plus Kentucky, other states are welcome to join. MCMC works to translate competencies acquired by

military-connected students and veterans through military training and experiences to college credentials that lead to employment in the civilian workforce. States exchange information and share best practices via knowledge communities in the areas of articulation of academic credit; communication and outreach; data, technology, and systems; and licensure and certification. Grants that are just now wrapping up, were awarded to MHEC by the Lumina Foundation and the Strada Education Network in 2015 to address barriers for military-connected students to access, participation, and completion in postsecondary education.

MCMC HIGHLIGHTS

- MCMC along with the National Center for Higher Education Management Systems (NCHEMS), was awarded \$25,000 this fall from the National Research Collaborative for Competency-Based Education and Learning and from Lumina Foundation. The funding will support a multi-state scan of military postsecondary credit policies and practices.
- Annual meeting supported by Strada Education Network included topics of discussion were the awarding of general education credit for military, licensing and certification, enhanced institutional collaboration with the military, improved data collection, and identification of crucial data points.
- Monthly newsletter updates and webinars keep stakeholders aware of MCMC's work.

NEXT STEPS

- **Military-Connected Students.** MCMC will work in partnership with the National Center for Higher Education Management Systems (NCHEMS) to implement the grant focused on the multi-state postsecondary policy and practice credit scan, continue to build out the network in terms of depth and breadth, and seek additional revenue sources to fund ongoing support.

POLICY INITIATIVES

OPEN EDUCATIONAL RESOURCES (OER)

Open Educational Resources (OER) are textbooks and supplemental learning materials that are accessible via the Internet at little or no cost to students or institutions. To make the cost of postsecondary education more affordable, many states and institutions have adopted or are seeking to adopt the use of OER.

MHEC worked to assist states and institutions in OER implementation by creating an OER Advisory Committee composed of institutional representatives who have varying levels of experience implementing OER from across the Midwest.

OER HIGHLIGHTS

- Convened stakeholders in November 2018 for the *OER Policy and Implementation Summit for the MHEC States*
- Shared OER policy and best practices, analyzed status of ongoing efforts, and devised action plans for increasing use of OER in MHEC states among

practitioners and policymakers during MHEC's OER Summit.

- Informed via list server, monthly newsletter, and regular conference calls to keep state action teams (4 to 5 people, including some legislative involvement) informed of OER efforts across the Midwest.

NEXT STEPS

Regional Collaboration. MHEC and the other three regional compacts - Western Interstate Commission for Higher Education (WICHE), New England Board of Higher Education (NEBHE), and the Southern Regional Education Board (SREB) - have received a planning grant from the William and Flora Hewlett Foundation to build out this work.



PROGRAMS

MHEC **PROGRAMS** are initiated in response to identified needs in one or more of the member states. Bringing together expertise from across the region, MHEC explores activities needed to address the identified needs. Solutions best solved through ongoing interstate cooperation are then developed into MHEC programs. Each MHEC program provides the program participants with governance and leadership structures to guide and maintain programmatic outcomes, often there is a cost savings component.

PROPERTY INSURANCE

MHEC's property insurance program, the Master Property Program (MPP), was developed in 1994 to broaden property insurance coverage, reduce program costs, and encourage improved asset protection strategies for Midwestern 2- and 4-year colleges and universities. MPP participation has more than 165 campuses with total insured values of nearly \$81.82B.

Due to the program's success, a mission was established to be the premier property insurance program for MHEC, the Western Interstate Commission for Higher Education (WICHE), the New England Board of Higher Education (NEBHE), and the Southern Regional Education Board (SREB) member institutions with a focus on strategic growth, program stability, and member value. Marsh, Inc. provides program administration, collaboratively underwritten by multiple worldwide underwriters and is supported by Captive Resources, Inc. under the direction of the MPP Leadership Committee representative of the insured institutions.

As demonstrated by benchmarking, the program costs continue to remain below industry averages due to the program's volume and asset protection strategies tailored to higher education institutions.

MPP HIGHLIGHTS

- Despite a challenging property insurance market and several large property losses occurring over the past two years, the MPP experienced a successful July 1 renewal.

- More than \$17.68M was saved by participating institutions in the MHEC region.
- The 21st Annual Loss Control Workshop included over 150 MPP participants including campus risk managers and fiscal officers, as well as personnel from campus legal, physical plant, facilities, and purchasing departments.

NEXT STEPS

Membership Survey. MPP members will be given an opportunity to advise the program's Leadership Committee on what coverages are most important to their campus, how they wish to have future dividend disbursements applied, and to see if there are other insurance programs that MHEC could offer to benefit their institutions.

Request for Lower Deductible. The Underwriting Subcommittee has taken on the task of developing a deductible buy-down for the \$300,000 hail and tornado deductible.

HEALTH INSURANCE SOLUTIONS

The Compact's student health insurance solutions program, MHECare, was created in conjunction with MHEC's Student Health Benefits Advisory Committee, a network of institutional peers, health center professionals, and risk managers focused on student health. MHECare provides campuses that offer students a school-sponsored plan the flexibility to tailor plans specifically to meet the needs of their students with national carrier UnitedHealthcare StudentResources.

As states continue to adjust to changes due to the Affordable Care Act, MHECare campuses will be well-served by a carrier that is compliant and fully equipped to rapidly respond to changes in regulations. Campuses can leverage MHECare knowing that MHEC has performed its due diligence through a comprehensive and extensive RFP process, enabling student health administrators the opportunity to spend their time focused on efforts that will directly impact and benefit students.

PROGRAMS

The program is also available to postsecondary institutions of MHEC's sister compact regions in the New England Board of Higher Education (NEBHE), the Southern Regional Education Board (SREB), and the Western Interstate Commission for Higher Education (WICHE).

MHEC also provides an option with IXSolutions for private student health insurance exchanges for those institutions, in the MHEC region only, that are unable to offer a school-sponsored plan. Through a private health insurance exchange, campuses can offer students multiple coverage options, provide support from insurance experts, and save valuable administrative time.

NEXT STEPS

Growth Strategies. MHEC has met with UnitedHealthcare StudentResources senior leadership to discuss growth strategies and ways in which MHEC can provide additional benefits to its participating institutions.

RFP. This winter MHEC will be pulling together its Student Health Benefits Advisory Committee to conduct an RFP for MHECare as existing contracts with carriers are nearing completion. As part of this process the committee will consider additional offerings that may assist in supporting student health.

MIDWEST STUDENT EXCHANGE PROGRAM

The Midwest Student Exchange Program (MSEP) offers reduced tuition rates to students in the states of Illinois, Indiana, Kansas, Minnesota, Missouri, Nebraska, North Dakota, and Wisconsin. Michigan recently moved to an inactive status, and Iowa and South Dakota elected not to participate in the 2018-2019 academic year. This program is similar to those offered by the other three regional compacts.

Since 1994, MHEC has been providing more affordable educational opportunities for students to attend out-of-state institutions at reduced costs. MSEP serves as the Midwest's largest multi-state tuition reciprocity program. Nearly 60 campuses from the participating

MSEP ENROLLMENT BY STUDENTS' HOME STATE OF RESIDENCE

2018-2019 SCHOOL YEAR	
STATE	ENROLLMENT
Illinois	7,468
Indiana	285
Kansas	748
Michigan	900
Minnesota	1,034
Missouri	953
Nebraska	896
North Dakota	81
Ohio	289
Wisconsin	512
TOTAL	13,166

states have opened their doors to students at reduced rates. Public institutions enrolling students under the program agree to charge no more than 150% of the in-state resident tuition rate while private institutions offer a 10% reduction on their tuition rates.

MSEP HIGHLIGHTS

- MSEP savings totaled over \$93.54M for students and their families in FY19.
- 13,166 students participated in the program
- Actual savings through the program will vary from institution to institution depending upon the tuition rates. Participating students will typically realize savings between \$500 and \$5,000 annually.

NEXT STEPS

Comprehensive Report. In order to provide better information and service to students and institutions, MHEC is developing a report that will include national scan, research and thorough program review to determine the current relevance and value of the program. The final report of those findings is expected in early 2020.

PROGRAMS

MIDWESTERN-STATE AUTHORIZATION RECIPROCITY AGREEMENT (M-SARA)

The Midwestern-State Authorization Reciprocity Agreement, or M-SARA, provides a voluntary, regional approach to state oversight of postsecondary distance education. When states join SARA -- and membership is voluntary -- they agree to follow uniform processes for approving their eligible institutions' participation in SARA. They also agree to deal with other states' SARA institutions in a common way when those institutions carry out activities in SARA states other than their own. SARA's uniform standards and policies provide benefits to both states and institutions carrying out distance education in multiple states. Since 2013, this approach has streamlined, improved, and added consistency to the approach an institution must take to offering distance education programs or courses across state lines. It has improved and streamlined what was once a much more time intensive and cost prohibitive process.

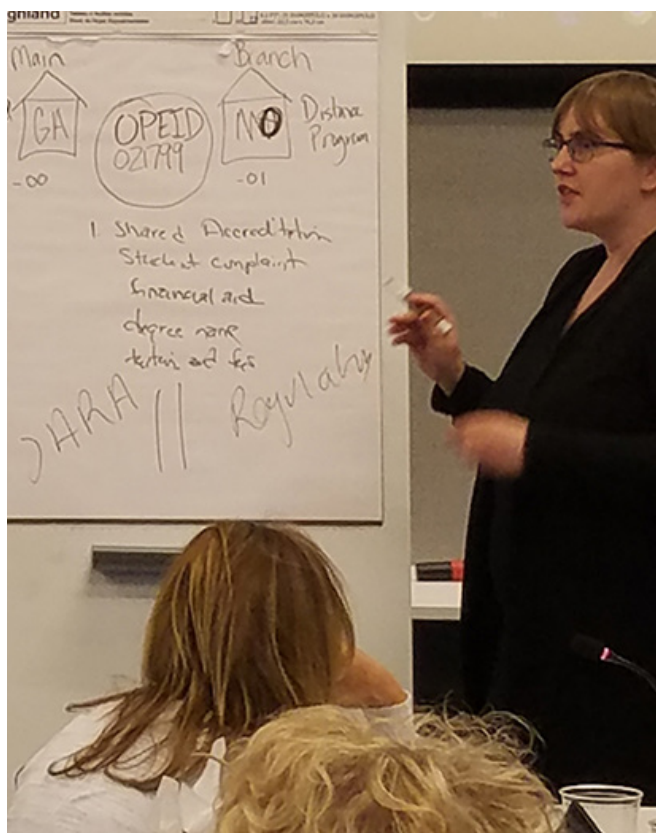
SARA HIGHLIGHTS

- Saved M-SARA institutions an estimated \$15.74M in FY19.
- Participating SARA institutions exceeds 2,000, nationally with about one-third of participating institutions located in MHEC states.
- The M-SARA Regional Steering Committee and the Midwestern SARA State Portal Agents meet quarterly, with an annual face-to-face meeting taking place in July.
- 49 states, the District of Columbia, Puerto Rico, and the U.S. Virgin Islands are members of SARA.
- May 2019: NC-SARA implemented the fourth round of institutional data collection and enhanced data collection with reporting of clinical field placements.
- August 2019: NC-SARA launched a new institutional and student support website. The State Authorization Guide is included in NC-SARA's new website.

NEXT STEPS

Leadership of SARA. After nearly six years of being MHEC's M-SARA Regional Steering Committee (RSC) chair, Gretchen Bartelson, dean of the Center for Teaching and Learning at Northwest Iowa Community College, will be stepping down from this role. In addition to selecting a new chair, the RSC is also adding a new vice chair role and selecting an individual to fill this position.

Lori Williams, a 25-year veteran of online higher education, recently joined the Boulder-based NC-SARA as the new president and CEO.



MHEC's approach to **HIGHER EDUCATION RESEARCH AND POLICY ANALYSIS** is meant to inform institutional and state efforts in improving postsecondary policies, practices, and outcomes. MHEC supports the work of commissioners, state legislators and agency staff, institutional and system leaders, and the broader community of higher education administrators and researchers in several ways:

1. Maintaining a national repository of state, system, and non-profit related expertise, knowledge and best practices for guiding policy and practice;
2. Conducting applied research and analysis on critical topics in higher education;
3. Developing innovative approaches to improve educational opportunity and effectiveness; and
4. Providing public outreach and service to institutions and governments.
5. Respond to inquiries and requests from stakeholders.

RESEARCH HIGHLIGHTS

Reports and Briefs. Five publications were released in affordability and finance, and a performance update was produced for each member state. MHEC's publications are available for download at www.mhec.org/research.

Interactive Dashboard. MHEC is soliciting feedback until March 1, 2020, from state agency staff and other interested stakeholders on a piloted version of an online tool that allows users to select from a comprehensive set of performance indicators focused on attainment and the economy. The data, much of which is student related, is disaggregated where possible, by race, ethnicity and income and allows for comparisons between and among states as well as against the U.S. as a whole. MHEC's interactive dashboard can be accessed at: <https://www.mhec.org/research/mhec-interactive-dashboard>.

Postsecondary attainment gap projections. A MHEC-coordinated research team is developing postsecondary enrollment and attainment projections by race and ethnicity for Illinois through 2030. The study is partly funded through a grant from the Joyce Foundation. The study will serve as the basis for creating related projections for other MHEC states.

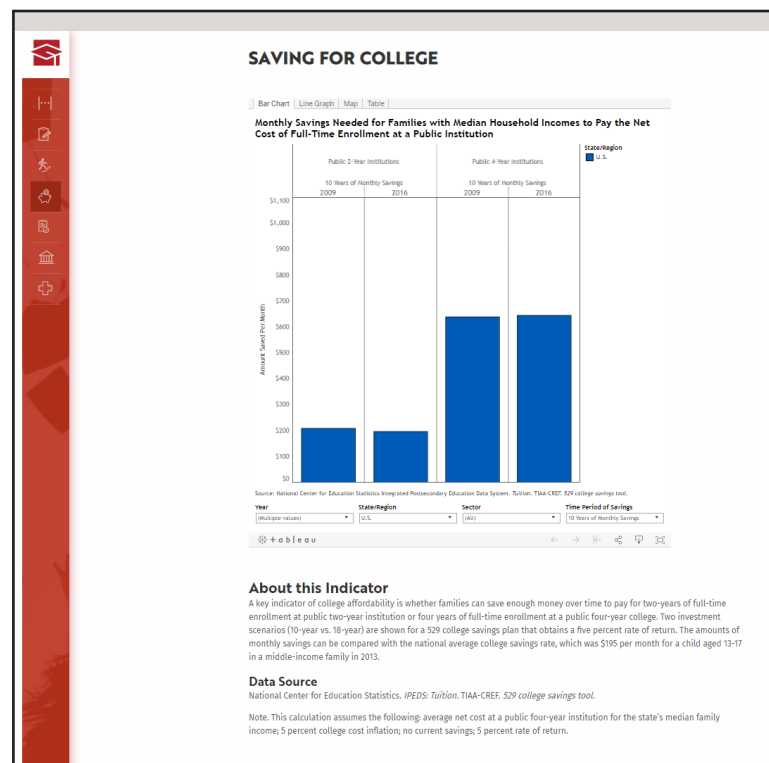
NEXT STEPS

Student Loan Debt. MHEC is producing a policy brief that examines recent trends in student loan debt, the amount of debt accumulated during college by race/ethnicity and family income, research on the effects of debt accumulation, and policy options for institutions and states in collaboration with the federal government.

Higher Education in Focus. This biennial report is intended to inform public discourse on higher education by providing key performance indicators relevant to the goal of increasing educational attainment. Performance indicators are categorized within five key areas of focus: preparation, participation, affordability, completion, and finance.

Regional Research Agenda. Consistent with MHEC's strategic priorities, stakeholder feedback will be solicited to inform MHEC's research priorities over the next two years.

EXAMPLE OF MHEC'S INTERACTIVE DASHBOARD



CONTRACTS

MHEC's approach to education technology **CONTRACTS** provides agreements that are a product of a representative group of stakeholders from the higher education technology community by conducting a competitive sourcing process that leverages the potential purchasing power of the 12 MHEC member states.

Timely, effective, cost efficient technology solutions.

The end result is a master agreement that facilitates a direct relationship between the technology providers and institutions and contains discounted pricing as well as terms and conditions that are better than most higher education institutions can negotiate individually. Established price ceiling for purchases, with additional discounts often available from vendors for special or large order purchases.

Contract Flexibility. By entering into agreements for the benefit of its member states, MHEC provides institutions with a procurement tool that allows more flexibility while still maintaining compliance with applicable procurement statutes. MHEC has adopted a policy that requires MHEC contracts to be awarded based on competitive bid requirements that are consistent with the statutory procurement rules of the Compact member states.

Reduced Duplication of Effort. This process is designed to minimize the burden on administrative resources for institutions in the 12 MHEC member states, saving both time and money, while expediting technology acquisitions. Competitive solicitations integrates with the institutions' procurement process with negotiated Master Agreement terms and conditions, licensing, and pricing. Additionally, it allows an institution to focus most of its energy on finding the technology solution that best fits its needs instead of the contract itself.

CURRENT CONTRACTS

WWW.MHEC.ORG/CONTRACTS

- Computers: Dell, HP Enterprise, HP Inc., Lenovo United States, Lenovo Global, and Oracle

- Data and Networking Initiatives: Alcatel-Lucent/ Dice Communications, Ciena/Walker and Associates, Inc., Dell, and HP Enterprise
- Printers and Peripherals: HP Inc. and Xerox
- Security Event and Information Management (SEIM): MicroFocus (Novell)
- Services: Info-Tech Research Group and Parchment
- Software: Arrow Electronics/CommVault, Arrow Electronics/VMware, Corel Corporation, Micro Focus (Novell), Oracle, and SAS

TECHNOLOGY HIGHLIGHTS

- Saved entities in the MHEC region over \$29.69M in FY19.
- Most contracts available to other regional compacts: New England Board of Higher Education (NEBHE); the Southern Regional Education Board (SREB); and the Western Interstate Commission for Higher Education (WICHE) member states.
- Provided strong sales among the technology initiatives with over \$450M incurred nationally.
- Hosted a breakfast at EDUCAUSE 2019 with over 60 in attendance.
- Presented, attended, or hosted a MHEC table/ booth at over 15 state, regional, or national conferences.

NEXT STEPS

Anticipated IT Solicitations. MHEC continually develops strategic contracts that provide easier and quicker access to IT hardware, software, and services. Anticipated IT solicitations over the next year encompass virtualization, research and advisory services, transcript services, and creative software. Each of the categories will be thoroughly researched, scope of the objective defined, vendor environment scanned, and input from the higher education community will be included.

MHEC Annual Estimated Savings for Entities and Citizens

MHEC Member States	2018-2019 Annual State Commitment	Total Annual Savings	Contracts			Programs		
			Computing Hardware ¹	Computing Software ²	Technology Services ³	Master Property Program ⁴	Midwest Student Exchange Program ⁵	Midwestern- State Authorization Reciprocity Program ⁶
Illinois	115,000	63,504,264	7,932,299	338,993	18,917	1,786,556	50,731,499	2,696,000
Indiana	115,000	6,621,689	3,312,053	231,213	NP ⁷	NP ⁷	1,734,423	1,344,000
Iowa	115,000	1,590,435	250,215	10,365	NP ⁷	225,855	NP ⁷	1,104,000
Kansas	115,000	17,878,832	809,310	109,872	28,459	10,714,389	5,088,802	1,128,000
Michigan	115,000	12,284,219	4,114,927	121,741	4,036	233,683	6,289,832	1,520,000
Minnesota	115,000	11,401,412	1,948,891	661,923	53,965	NP ⁷	7,088,633	1,648,000
Missouri	115,000	16,109,248	2,180,775	82,481	NP ⁷	3,298,688	8,707,304	1,840,000
Nebraska	115,000	3,321,424	667,572	107,862	NP ⁷	1,293,351	588,639	664,000
North Dakota	115,000	7,232,018	38,649	97,901	NP ⁷	NP ⁷	6,735,468	360,000
Ohio	115,000	6,233,866	1,536,321	176,174	18,941	125,723	2,256,707	2,120,000
South Dakota	115,000	78,194	45,024	33,170	NP ⁷	NP ⁷	NP ⁷	NP ⁷
Wisconsin	115,000	7,692,643	1,910,078	138,562	1,335	NP ⁷	4,322,668	1,320,000
Program Totals	\$1,380,000	\$153,948,244	\$24,746,114	\$2,110,257	\$125,653	\$17,678,245	\$93,543,975	\$15,744,000

Footnotes:

1. Contracts include: Dell, HP, Lenovo, Alcatel-Lucent, Ciena/Walker and Associates, and Xerox.
2. Contracts include: Novell/MHEC Collaborative Program, Oracle, Arrow/VMMWare, SAS, and Corel.
3. Contracts include: Info-Tech Research Group and Parchment.
4. Based on premium and loss information as of June 30, 2019.
5. Student tuition savings for the academic year 2018-2019.
6. Savings does not include personnel and travel cost savings.
7. Non-participating state for 2018-2019.

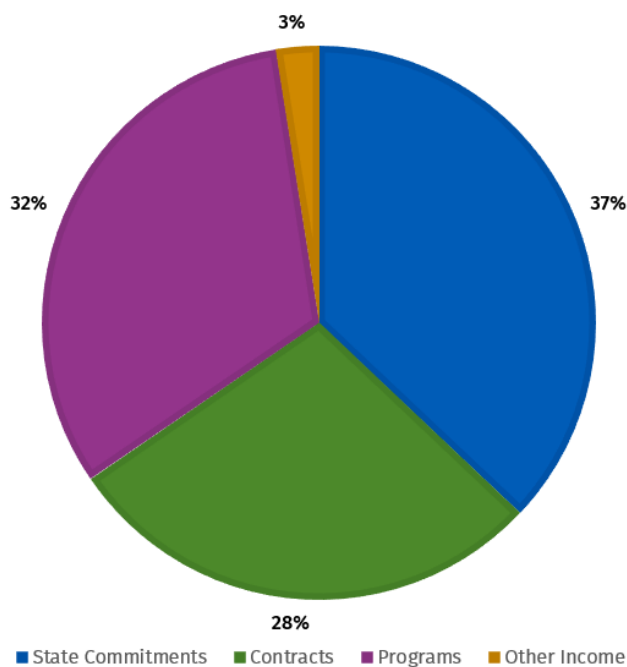
MHEC Cumulative Estimated Savings for Entities and Citizens through June 2019

MHEC Member States	Contracts				Programs			Cumulative State Savings	What Member States Paid Cumulative (State Commitment)
	Computing Hardware ¹	Computing Software ²	Technology Services ³	Legacy Initiatives ⁴	Master Property Program ⁵	Midwest Student Exchange Program ⁶	State Authorization Reciprocity Agreement ⁹		
Illinois Member Since 8/20/1991	98,475,662	6,860,828	3,403,391	15,672,186	49,869,867	227,092,311	7,296,000	408,670,245	2,397,000
Indiana Member Since 3/14/1996	32,870,877	3,197,729	2,659,416	5,358,571	440,095	10,006,495	3,960,000	58,493,183	2,107,000
Iowa Member Since 6/6/2005	6,726,376	381,156	11,399	231,371	542,127	\$0	3,560,000	11,452,429	1,375,000
Kansas Member Since 4/25/1990	10,135,960	2,109,246	144,137	3,025,262	22,013,634	78,299,352	3,264,000	118,991,591	2,397,000
Michigan Member Since 7/24/1990	54,090,335	4,002,103	3,550,509	43,222,866	17,248,001	57,031,923	4,104,000	183,249,737	2,397,000
Minnesota Member Since 4/26/1990	19,934,443	5,136,615	499,431	10,876,074	15,306,381	50,082,828	4,744,000	106,579,771	2,397,000
Missouri Member Since 5/9/1990	24,319,032	2,144,349	45,081	5,484,930	41,327,712	57,608,366	5,424,000	136,353,469	2,397,000
Nebraska Member Since 6/5/1991	5,451,189	1,653,243	57,678	2,127,919	12,740,847	67,510,846	1,992,000	91,533,721	2,397,000
North Dakota Member Since 4/22/1999	1,628,962	947,399	31,581	1,000,822	0	11,417,631	1,056,000	16,082,395	1,875,000
Ohio Member Since 1/9/1991	29,882,794	3,828,867	1,560,409	32,198,285	349,707	2,918,489	6,000,000	76,738,551	2,397,000
South Dakota Member Since 3/13/2008	564,413	424,910	\$4,950	NA	492,535	0	0	1,486,808	1,125,000
Wisconsin Member Since 4/18/1994	20,781,722	1,052,466	392,665	6,747,463	0	42,704,072	4,024,000	75,702,389	2,223,000
TOTAL	\$304,861,765	\$31,738,909	\$12,360,647	\$125,945,750	\$160,330,906	\$604,672,313	\$45,424,000	1,285,334,289	25,484,000

FOOTNOTES:

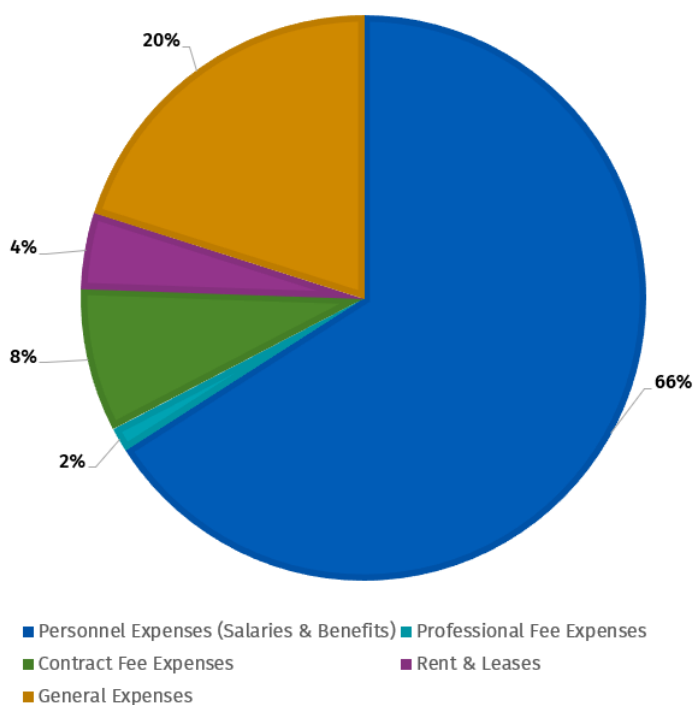
1. Contracts include: Dell, HP, Lenovo, Juniper, Enterasys, Systemax, Mitel, Sun, EQ, Alcatel-Lucent, Ciena/Walker and Associates, and Xerox.
2. Contracts include: Novell/MHEC Collaborative Program, Oracle, Corel, Arrow/VMMWare, SAS, and Open Systems.
3. Contracts include: Info-Tech Research Group, Parchment, and CampusEAI.
4. Expired contracts include: office products, telecommunications, equipment maintenance, and academic scheduling. Interactive video, and APN.
5. Based on premium and loss information as of June 30, 2019.
6. Iowa State University asked MHEC to bid their property insurance for FY 2009. The MHEC bid, with a much lower deductible, was \$186,205 less per year than ISU was paying. ISU selected their current carrier at a price of \$858,824 or \$201,532 less than paid in FY 2008.
7. In 2009, 2012, and 2013, SD Office of Risk Management requested a quote for property insurance at its six SD Regent institutions. Even though the SD Offices of Risk Management kept its current carrier, they indicated the MHEC quotes saved the institutions \$85,000, \$239,302, and \$168,233 respectively.
8. Student tuition savings through the academic year 2018-2019.
9. Savings does not include personnel and travel cost savings.

FY19 REVENUE



FY19 REVENUE	
State Commitments	\$1,380,000
Contracts	\$1,058,073
Programs	\$1,194,718
Other Income	\$92,704

FY19 EXPENSES



FY19 EXPENSES	
Personnel Expenses (Salaries & Benefits)	\$2,296,848
Professional Fee Expenses	\$48,350
Contract Fee Expenses	\$285,541
Rent & Leases	\$151,402
General Expenses	\$699,943

2018-19 MHEC COMMISSIONERS

ILLINOIS

The Hon. Kelly Burke, Representative, Illinois General Assembly
Term ended: 3/2019

The Hon. La Shawn K. Ford, State Representative, Illinois General Assembly
3/12/2019 - 1/2/2021

Ms. Mollie Foust, Senior Counselor to the Deputy Governors, Illinois Governor's Office
10/8/2019 - APOG

Dr. Alice Marie Jacobs, Board Member, Board of Higher Education
3/5/2019 - 1/1/2023

The Hon. Pat McGuire, Senator, Illinois General Assembly
3/25/2019 - 1/13/2021

Ms. Suzanne Morris, Board Member, Illinois Community College Board
6/7/2019 - 7/1/2023

INDIANA

Dr. Charles R. Johnson, President, Vincennes University
3/27/2017 - 2/1/2021

The Hon. Jack Jordan, Representative, Indiana General Assembly
7/2/2019 - 6/30/2020

Dr. David W. Wantz, President & CEO, Independent Colleges of Indiana
4/1/2019 - 2/28/2020

The Hon. Wendy McNamara, Representative, Indiana General Assembly
Term ended: 6/2019

The Hon. Andy Zay, Senator, Indiana General Assembly
6/28/2019 - 7/1/2021

Dr. Ken Sauer, Senior Associate Commissioner and Chief Academic Officer, Indiana Commission for Higher Education
3/27/2017 - APOG

Commissioner Alternate

Ms. Teresa Lubbers, Commissioner, Indiana Commission for Higher Education
1/5/2010

IOWA

Ms. Nancy Boettger, Regent, Board of Regents, State of Iowa
5/3/2017 - 6/30/2021

Mr. Derrick R. Franck, Board Member, Iowa Association of Community College Trustees
7/1/2017 - 7/1/2021

The Hon. Tim Kraayenbrink, Senator, Iowa Legislature
Term ended: 1/2019

Ms. Olivia M.A. Madison, Iowa Governor's Designee
5/1/2019 - 4/30/2021, APOG

The Hon. Joe Mitchell, Representative, Iowa Legislature
1/31/2019 - 1/10/2021

The Hon. Herman Quirmbach, Senator, Iowa Legislature
1/14/2019 - 1/10/2021

Commissioner Alternates

Mr. Andrew Baumert, Vice President for Marketing and Outreach, Iowa Association of Independent Colleges and Universities
7/28/2016 - 1/1/2020

The Hon. Jane Bloomingdale, Representative, Iowa Legislature
Term ended: 1/2019

Mr. Todd Brown, Division Administrator, Financial Aid Program Administration, Iowa College Student Aid Commission
7/25/2017 - 7/1/2021

Mr. Timothy Fitzgibbon, Senior Vice President, First National Bank
5/1/2019 - 4/30/2021, APOG

The Hon. Carrie Koelker, Senator, Iowa Legislature
2/4/2019 - 1/10/2021

The Hon. Wally Horn, Senator, Iowa Legislature
Term ended: 1/2019

The Hon. Sharon Steckman, Representative, Iowa Legislature
5/6/2019 - 1/10/2021

KANSAS

The Hon. Barbara Ballard, Representative, Kansas Legislature
11/4/2019 - 7/1/2021

The Hon. Molly Baumgardner, Senator, Kansas Legislature
11/4/2019 - 7/1/2021

Dr. Blake Flanders, President and CEO, Kansas Board of Regents
9/20/2018 - 6/1/2022

The Hon. Kevin Jones, Representative, Kansas Legislature
Term ended 1/2019

Mr. Aaron A. Otto, KS Governor's Designee
7/25/2019 - APOG

Mr. Richard Short, President, Short & Son, Inc. KS Governor's Designee
4/30/2018 - APOG

Dr. Helen VanEtten, Board Member, Kansas Board of Regents
9/20/2018 - 6/1/2022

Commissioner Alternates

The Hon. Marci Francisco, Senator, Kansas Legislature
11/4/2019 - 7/1/2021

The Hon. Ken Rahjes Representative, Kansas Legislature
11/4/2019 - 7/1/2021

MICHIGAN

Dr. David L. Eisler, President, Ferris State University
6/8/2017 - 3/18/2021

Ms. Brandy M. Johnson, Postsecondary and Workforce Policy Advisor, Michigan Office of the Governor
4/16/2019 to APOG

The Hon. Kim LaSata, Senator, Michigan Legislature
4/8/2019 - 12/31/2020

Dr. Bill Pink, President, Grand Rapids Community College
8/16/2019 - 3/18/2023

Mr. Tyler Sawher, Senior Strategy Advisor for Education and Career Connections, Office of the Governor, State of Michigan
Term ended: 1/2019

The Hon. Tonya Schuitmaker, Senator, Michigan Legislature
1/1/2017 - 12/31/2018

The Hon. Scott VanSingel, Representative, Michigan Legislature
2/8/2019 - 12/31/2020

Commissioner Alternates

Dr. Daniel J. Hurley, Chief Executive Officer, Michigan Association of State Universities
7/1/2015

Casandra Ulbrich, President, State Board of Education
1/9/2019 - APOG

MINNESOTA

The Hon. Paul T. Anderson, Senator, Minnesota Legislature
2/7/2019 - 12/31/2020

The Hon. Connie Bernardy, Representative, Minnesota Legislature
2/1/2019 - 1/5/2021

Dr. Karen Hanson, Executive Vice President and Provost, University of Minnesota
3/25/2017 - 1/4/2021

Dr. Devinder Malhotra, Chancellor, Minnesota State
10/5/2017 - 1/4/2021

The Hon. Bud Nornes, Chair, Higher Education Policy and Finance, Minnesota State Legislature
5/25/2017 - 1/2/2019

Mr. Dennis Olson, Commissioner, Minnesota Office of Higher Education
4/30/2019 - 1/2/2023; APOG

Mr. Lawrence Pogemiller, Commissioner, Minnesota Office of Higher Education
Term ended: 1/2019

Commissioner Alternates

The Hon. Lyndon Carlson, Representative, Minnesota State Legislature
5/5/2015

Mr. Paul Cerkvenik, President, Minnesota Private College Council
12/8/2014

2018-19 MHEC COMMISSIONERS

MISSOURI

The Hon. Allen Andrews, Representative,
Missouri General Assembly
1/13/2017 - 7/1/2019

Dr. Kayla Hahn, Policy Director, Missouri
Governor Michael Parson
2/6/2019 - APOG

Dr. David C. Knes, Superintendent, Valley Park
School District
Term ended: 6/2019

The Hon. Gary Romine, Senator, Missouri
General Assembly
1/15/2019 - 1/2/2021

Dr. Susan Thomas, President, Truman State
University
6/3/2019 to 1/1/2021

Dr. Margie Vandeven, Commissioner of
Education, Missouri Department of
Elementary and Secondary Education
6/3/2019 - 1/1/2022

Commissioner Alternate

Dr. Zora Mulligan, Commissioner of Higher
Education, Missouri Department of Higher
Education & Workforce Development
8/29/2016

NEBRASKA

The Hon. Sue Crawford, Senator, Nebraska
Legislature
Term ended: 1/2019

Dr. Randolph M. Ferlic, Former Regent,
University of Nebraska System
1/2/2019 - 1/1/2023, APOG

Dr. Deborah Frison, Vice Chair, Coordinating
Commission for Postsecondary Education
1/2/2019 - 1/1/2023

Dr. Susan M. Fritz, Executive Vice President
and Provost and Dean of the Graduate
College, University of Nebraska
1/2/2019 - 1/1/2023

The Hon. Rick Kolowski, Senator, Nebraska
Legislature
1/25/2019 - 1/2/2021

The Hon. Julie Slama, Senator, Nebraska
Legislature
1/25/2019 - 1/2/2021

Commissioner Alternate

Dr. Michael Baumgartner, Executive Director,
Coordinating Commission for
Postsecondary Education
9/3/2014

NORTH DAKOTA

The Hon. Kyle Davison, Senator, North Dakota
Legislative Assembly
6/19/2019 - 6/30/2021

Tim Flakoll, North Dakota Governor's
Designee
12/15/2017 - APOG

Dr. Mark Hagerott, Chancellor, North Dakota
University System
7/1/2019 - 6/30/2023

The Hon. Dennis Johnson, Representative,
North Dakota Legislative Assembly
6/19/2019 - 6/30/2021

Mr. Don Morton, Member, State Board of
Higher Education
7/1/2017 - 6/30/2021

Commissioner Alternate

Dr. James L. Davis, Former President, Turtle
Mountain Community College
2/14/2017

OHIO

The Hon. Rick Carfagna, Representative, Ohio
Legislature
3/4/2019 - 1/2/2021

Mr. Gary Cates, Senior Vice Chancellor,
Innovation & Enterprise Development,
Ohio Department of Higher Education
1/9/2019 - 1/8/2023

Dr. Stephanie Davidson, Vice Chancellor,
Academic Affairs, Ohio Department of
Higher Education
1/15/2019 - APOG

The Honorable Mike Duffey, Chair, Higher
Education and Workforce Development,
Ohio General Assembly
Term ended: 1/2019

The Honorable Randy Gardner, Majority Floor
Leader, Ohio General Assembly
5/8/2017 - 12/31/2018

Mr. Jack Hershey, President and CEO, Ohio
Association of Community Colleges
1/9/2017 to 1/8/2021

The Hon. Stephanie Kunze, Senator, Ohio
Legislature
4/15/2019 - 12/31/2020

Commissioner Alternates

Mr. Bruce Johnson, President,
Inter-University Council of Ohio
1/10/2007

Dr. David Ponitz, President Emeritus,
Sinclair Community College
10/30/1997

SOUTH DAKOTA

The Hon. Julie Bartling, Assistant Minority
Leader, South Dakota Legislature
Term ended: 1/2019

Dr. Michael Cartney, President, Lake Area
Technical Institute
8/7/2017 - 1/2/2021

The Hon. Erin Healy, Representative, South
Dakota Legislature
3/29/2019 - 12/31/2020

The Hon. V.J. Smith, Senator, South Dakota
Legislature
3/29/2019 - 12/31/2020

Mr. Larry J. Tidemann, Chair, South Dakota
Governor's Designee
1/11/2019 - APOG

Dr. Janelle Toman, Director of
Communications, South Dakota Board of
Regents
9/10/2018 - 6/30/2022

Commissioner Alternates

The Hon. Mary Duvall, Representative, South
Dakota Legislature
Term ended: 1/2019

The Hon. Reynold Nesiba, Senator, South
Dakota Legislature
3/29/2019 - 12/31/2020

The Hon. Marli Wiese, Representative, South
Dakota Legislature
3/29/2019 - 12/31/2020

WISCONSIN

The Hon. Joan Ballweg, Representative,
Wisconsin State Legislature
10/2/2019 - 6/30/2021

Dr. Connie Hutchison, Executive Secretary,
State of Wisconsin Higher Educational
Aids Board
6/25/2019 - 7/1/2021

Mr. Donald Madelung, Vice President, Pierce
Colleges
Term ended: 1/1/2019

The Hon. Stephen Nass, Senator, Wisconsin
State Legislature
2/21/2019 - 1/1/2021

Julie Underwood, Dean of Education,
University of Wisconsin-Madison
4/2/2019 - APOG

Dr. Rolf Wegenke, President, Wisconsin
Association of Independent Colleges and
Universities
3/14/2019 - 7/1/2023

Commissioner Alternates

Dr. Morna K. Foy, President, Wisconsin
Technical College System
3/11/2013

Mr. Sean P. Nelson, Vice President of Finance,
University of Wisconsin System
2/6/2018

2018-19 MHEC COMMITTEES

M-SARA REGIONAL STEERING COMMITTEE

Gretchen Bartelson, Northwest Iowa Community College, IA (Chair)
Stephanie Davidson, Ohio Department of Higher Education, OH
Kathleen Fimple, Coordinating Commission for Postsecondary Education, NE
Chris Foley, Indiana University, IN
Morna Foy, Wisconsin Technical College System, WI
Shellie Haut, Central Michigan University, MI
Robin Hemenway, Saint Mary's University of Minnesota, MN
Sue Huppert, Des Moines University, IA
Mary Kochleff, Xavier University, OH
Susan Landers, College of DuPage, IL
Mike Michaelis, Fort Hays State University, KS
Nkechi Onwuameze, Illinois Board of Higher Education
Jerry Rostad, North Dakota University System, ND
Ken Sauer, Indiana Commission for Higher Education, IN
Betsy Talbot, Minnesota Office of Higher Education, MN
Laura L. Vedenhaupt, Missouri Department of Higher Education & Workforce Development, MO

MASTER PROPERTY PROGRAM (MPP) LEADERSHIP COMMITTEE

Joseph Rayzor, University of Northern Iowa, IA (Chair)
Craig Kispert, Seattle Pacific University, WA (Vice Chair)
Laura Betzold, University of Wyoming, WY
Thomas Clayton, Johnson County Community College, KS
Adam Green, University of Maine System, ME
Tina Harlan, University of Illinois, IL
Kevin Harford, University of Nebraska, NE
Ruth Kemper, Northwest Missouri State University, MO
Ed Knollmeyer, University of Missouri, MO

Michael Rosenberg, University of Kansas, KS
Lisa Schaller, Nevada System of Higher Education, NV
Doug Warthen, Central Ohio Technical College, OH
Andrew Zerbel, Northern Michigan University, MI

MASTER PROPERTY PROGRAM (MPP) LOSS CONTROL PLANNING COMMITTEE

Doug Warthen, Central Ohio Technical College, OH (Chair)
Blake Abbe, Kansas State University, KS
Thomas Clayton, Johnson County Community College, KS
Bryan Goodwin, Missouri Southern State University, MO
Angie Mitchell, Southeast Missouri State University, MO
Joseph Rayzor, University of Northern Iowa
Jeff Morris, Coffeyville Community College, KS
Michael Rosenberg, University of Kansas, KS

MIDWEST STUDENT EXCHANGE PROGRAM COUNCIL (MSEP)

Malinda Aiello, Illinois Board of Higher Education, IL
Aimee Arnold, University of Wisconsin System
Stephanie Bernoteit, Illinois Board of Higher Education, IL
Sam Christy-Dangermond, Kansas Board of Regents, KS
Max Fridell, Kansas Board of Regents, KS
Daniel Hurley, Michigan Association of State Universities, MI
Kadi Lukesh, Coordinating Commission for Postsecondary Education, NE
Stephanie McCann, Ohio Department of Higher Education, OH
Ross Miller, Indiana Commission for Higher Education, IN
Jodi Rouland, Minnesota Office of Higher Education, MN

Karen Showers, Wisconsin Technical College System, WI
Brandon Trujillo, Wisconsin Technical College System, WI
Leroy Wade, Missouri Department of Education & Workforce Development, MO
Brenda Zastoupil, North Dakota University System, ND

MULTI-STATE COLLABORATIVE ON MILITARY CREDIT (MCMC)

Paula Compton, Ohio Department of Higher Education, OH (Co-Chair)
Ken Sauer, Indiana Commission for Higher Education, IN (Co-Chair)
Connie Beene, Kansas Board of Regents, KS
Melissa Bell, Kentucky Council on Postsecondary Education, KY
Rachel Boon, Board of Regents, State of Iowa
Kathleen Fimple, Coordinating Commission for Postsecondary Education, NE
Lisa Johnson, North Dakota University System, ND
Sarah Mellon, Michigan Veterans Affairs Agency, MI
Rusty Monhollon, Missouri Department of Higher Education, MO
Jay Perry, South Dakota Board of Regents, SD
Sarah Salmons, Missouri Department of Higher Education & Workforce Development, MO
Gina Sobania, Minnesota State, MN
Diane Treis Rusk, University of Wisconsin System, WI

REVIEW PANEL FOR STATE POLICY AND PERFORMANCE DATA

Julie Bartling, South Dakota Legislature, SD
Sue Buth, University of Wisconsin System, WI
Jill Dannemiller, Ohio Department of Higher Education, OH
Tasha Dannenbring, South Dakota Board of Regents, SD
Gary Evenson, Wisconsin Association of Independent Colleges and Universities, WI

Committee members listed in italics are no longer serving on the committee but are recognized for their service during 2018-2019.

2018-19 MHEC COMMITTEES

Cynthia J. Farrier, Kansas Board of Regents, KS
Meredith Fergus, Minnesota Office of Higher Education, MN

Jill M. Heese, Coordinating Commission for Postsecondary Education, NE

Jeremy Kintzel, Missouri Department of Higher Education & Workforce Development, MO

Eric Lichtenberger, Illinois Board of Higher Education, IL

Bob Murphy, Michigan Association of State Universities, MI

Jason Pontius, Board of Regents, State of Iowa, IA

Thomas Sanford, Minnesota Office of Higher Education, MN

Sean Tierney, Indiana Commission for Higher Education, IN

Jennifer Weber, North Dakota University System, ND

STUDENT HEALTH BENEFITS ADVISORY COMMITTEE

Laurie Burchett, University of Michigan-Ann Arbor, MI

Jessica Doty, University of North Dakota, ND
Ed Knollmeyer, University of Missouri System, MO

Richard Leninger, The John Marshall Law School, IL

Diana Malott, The University of Kansas, KS

TECHNOLOGIES COMMITTEE

John Dunning, Wayne State College, NE
(Chair)*

Teri Abbo, Oakland University, MI

Douglas Ahlgren, University of Minnesota-Twin Cities, MN

Gretchen Bartelson, Northwest Iowa Community College

Ross Berndt, Minnesota State, MN

Bret Blackman, University of Nebraska at Omaha, NE

Andrew Buker, University of Nebraska at Omaha, NE

Matthew Carver, Bethany College, KS

Nick Choban, Northern Illinois University, IL

Jason Davis, University of Minnesota, Duluth, MN

Daniel Drenkow, Augustana University, SD

John Ellinger, Bowling Green State University, OH

Cory Falldine, Emporia State University, KS

Jennell Flodquist, Minnesota State, MN

Eric Freeze, University of Kansas, KS

Jody French, North Dakota University System, ND

Darby Ganschow, University of South Dakota, SD

Ruth Ginzberg, University of Wisconsin System, WI

Committee members listed in italics are no longer serving on the committee but are recognized for their service during 2018-2019.



2018-19 MHEC COMMITTEES

Bernard Gulachek, University of Minnesota,
MN

David Hansen, South Dakota Board of
Regents, SD*

Dirk Huggett, North Dakota University
System, ND*

Craig Jackson, Illinois State University, IL

Darin King, North Dakota University System,
ND

*Debra Kidwell, Lincoln University, MO**

Darin King, North Dakota University System,
ND

Aric Kirkland, Eastern Michigan University, MI*

Rosi Klobberdanz, North Dakota Educational
Technology Council, ND

Tari Lambert, Transfer Indiana/Indiana
Commission for Higher Education, IN

Karl Lutzen, Missouri University of Science &
Technology, MO

Joshua Mack, North Iowa Area Community
College, IA

Loren Malm, Ball State University, IN*

Jennifer March-Wackers, Inter-University
Council of Ohio

Marty Mark, University of Northern Iowa, IA

Amy Metzger, University of Nebraska-Lincoln,
NE

Eric Mosterd, University of South Dakota, SD

Jeff Nelsen, Iowa Central Community College,
IA

Angela Neria, Pittsburg State University, KS*

David Overby, Dakota State University, SD

Ramon Padilla, Minnesota State, MN

Renee Pfeifer-Luckett, University of Wisconsin
System, WI

Vint Quamme, WTCS Purchasing Consortium, WI

John Rathje, Kent State University*

Ken Ries, University of Wisconsin-River Falls
& Stout, WI

Jerry Rostad, North Dakota University System,
ND

Wayne Sager, Northeast Community College,
NE

Kurt Smith, Central Michigan University, MI

Gary Stanowski, Columbia College, MO

*Timothy Smith, The Ohio State University /
College of Arts & Sciences, OH*

Chet Strebe, Northcentral Technical College,
WI*

Emily Styron, Ivy Tech Community College, IN

Scott Thede, Ferris State University, MI

Erik VanLaecken, Southeast Technical
Institute, SD

Mike Watson, University of Missouri, MO

Phil Wentworth, Zane State College, OH

Neil Wineman, University of Nebraska-
Lincoln, NE

Bill Young, Butler Community College, KS

*Shouhong Zhang, South Dakota State
University*

***Technologies Executive Committee**

Committee members listed in italics are no longer serving on the committee but are recognized for their service during 2018-2019.

INCOMING EXECUTIVE OFFICERS, NOVEMBER 2019



Chair

OLIVIA MADISON

Professor Emerita and Dean
Emerita of Library Services
Iowa State University



Vice Chair

DAVID EISLER

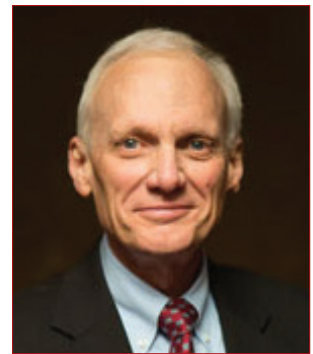
President
Ferris State University, MI



Treasurer

RICK CARFAGNA

State Representative; Chair,
Finance Subcommittee on Higher
Education, Ohio Legislature



Past Chair, 2018-2019

KEN SAUER

Sr. Assoc. Commissioner and
Chief Academic Officer, IN
Commission for Higher Education



MIDWESTERN HIGHER EDUCATION COMPACT

105 Fifth Avenue South, Suite 450 Minneapolis, MN 55401

PHONE: (612) 677-2777 FAX: 612-767-3353 E-MAIL: mhec@mhec.org

VISIT MHEC'S WEBSITE AT: WWW.MHEC.ORG