

PREPARING FOR THE WORST

CREATING A USABLE EXERCISE TO REDUCE RISKS

Gina Dolezal, Belfor Restoration Services
Karen McKinnis, Missouri State University
David Hall, Missouri State University

OUR GOAL

TO PROVIDE PARTICIPANTS A PROVEN PROCESS
FOR DEVELOPING A PROCESS TO TEST YOUR
CAMPUS RESPONSE TO A CRISIS THROUGH A TABLE
TOP EXERCISE.

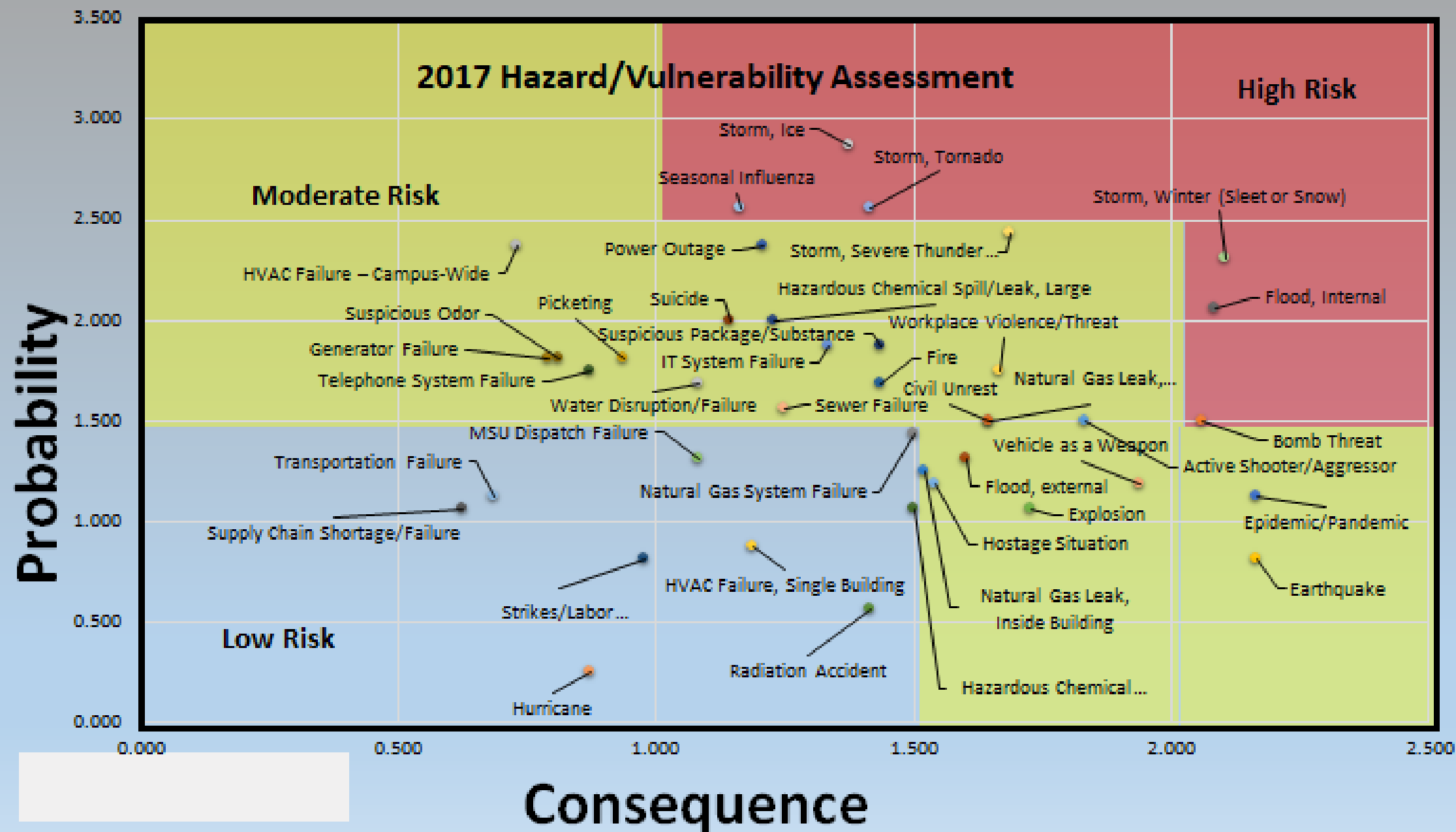
PRIORITIZING THE RISKS

STEP 1

HAZARD IDENTIFICATION AND RISK ASSESSMENT (HIRA)

- USE A CROSS-SECTION GROUP WITHIN THE UNIVERSITY.
- BRAINSTORM ALL OF THE POTENTIAL HAZARDS.
- USE A PROBABILITY-CONSEQUENCE RATING SYSTEM TO RATE EACH HAZARD.
- PLACE RATINGS IN A MATRIX TO IDENTIFY THE HIGHEST RISKS.
- DEVELOP EMERGENCY PLANS FOR EACH RISK.

Event		SEVERITY = (MAGNITUDE - MITGATION)						D
	PROBABILITY	HUMAN IMPACT	PROPERTY IMPACT	BUSINESS IMPACT	PREPARED-NESS	INTERNAL RESPONSE	EXTERNAL RESPONSE	
	Likelihood this will occur	Possibility of death or injury	Physical losses and damages	Interruption of services	Preplanning	Time, effectiveness, resources	Community/ Mutual Aid staff and supplies	
SCORE	0 = N/A	0 = N/A	0 = N/A	0 = N/A	0 = N/A	0 = N/A	0 = N/A	
	1 = Low	1 = Low	1 = Low	1 = Low	1 = High	1 = High	1 =High	
	2 = Moderate	2 = Moderate	2 = Moderate	2 = Moderate	2 = Moderate	2 = Moderate	2 = Moderate	
	3 = High	3 = High	3 = High	3 = High	3 = Low	3 = Low	3 = Low	
Active Aggressor								
Bomb Threat								
Civil Unrest								
Earthquake								
Epidemic/ Pandemic								
Explosion								
Flood, internal								
Flood, external								



HIRA ACTIVITY

THE HSEEP PROCESS

- THE MOST RECOGNIZE PROCESS IS FEMA'S HOMELAND SECURITY EXERCISE AND EVALUATION PROGRAM (HSEEP).
- IT PROVIDES A COMPREHENSIVE APPROACH TO THE MANAGEMENT AND EXECUTION OF EXERCISES.
- IT PROVIDES TEMPLATES TO GUIDE THE PROCESS.

ESTABLISH GOALS AND A PLANNING TEAM

STEP 2

THE HSEEP PROCESS

- UTILIZES INPUT FROM THE ELECTED AND APPOINTED OFFICIALS TO DETERMINE PRIORITIES.
- ESTABLISHES A PLANNING TEAM TO OVERSEE THE PROCESS, INCLUDING
 - ESTABLISHING PLANNING MEETINGS
 - DETERMINING OBJECTIVES
 - DESIGNING, CONDUCTING AND EVALUATING THE EXERCISE

THE HSEEP PROCESS

- WHILE A GREAT PROCESS, DON'T LET IT INTERFERE WITH THE DESIRED GOAL.
- RESOURCES:
 - FEMA ONLINE TRAINING:
 - IS-120 INTRODUCTION TO EXERCISES (3.0 HOURS).
 - K0146 HOMELAND SECURITY EXERCISE AND EVALUATION PROGRAM (HSEEP) TRAINING COURSE (16.0 HOURS).
 - HOMELAND SECURITY DOCUMENT: HOMELAND SECURITY EXERCISE AND EVALUATION PROGRAM (HSEEP).

CONDUCT PLANNING MEETINGS

STEP 3

PLANNING MEETINGS

- IDENTIFY PLANNING TEAM.
- IDENTIFY THE CORE CAPABILITIES TO BE TESTED, NOT THE SCENARIO.
- FOR THIS EXERCISE, WE WANTED TO TEST:
 - OPERATIONAL COORDINATION
 - SITUATIONAL ASSESSMENT
 - ECONOMIC RECOVERY

PLANNING MEETINGS

- DEVELOP SCENARIO THAT WILL TEST THOSE CORE CAPABILITIES.
 - MAKE IT REALISTIC!
- CREATE MEASURABLE OBJECTIVES.
- IDENTIFY PARTICIPANTS AND HOW TO GROUP THEM.
- IDENTIFY THE EVALUATORS.
- SET DATE AND LOCATION.
- CONSIDER REQUIRED LOGISTICS.
- REFINE THE SCENARIO.

CONDUCT THE EXERCISE

STEP 4

CONDUCTING THE EXERCISE

- HAVE EVERYONE SIGN IN AND SET AT ASSIGNED TABLE.
- EXPLAIN THE PURPOSE AND POSSIBLY REVIEW THE ORGANIZATION'S RELATED PLANS, STRUCTURE, ETC.
- LAY THE FOUNDATION FOR THE INCIDENT.
- GIVE THE SCENARIO.
- ALLOW PARTICIPANTS TO DISCUSS WITHIN THEIR GROUP AND REPORT OUT.

CONDUCTING THE EXERCISE

- PROVIDE THE NEXT PHASE OF THE INCIDENT.
- ALLOW PARTICIPANTS TO DISCUSS WITHIN THEIR GROUP AND REPORT OUT.
- CONTINUE THE PROCESS AS LONG AS TIME PERMITS.
- CONDUCT A HOTWASH TO FIND OUT WHAT WENT WELL AND WHAT COULD BE IMPROVED UPON.

CREATE AN AFTER ACTION PROCESS

STEP 5

AFTER EXERCISE PROCESS

- SEND OUT AN EVALUATION TO ASSESS THE EXERCISE.
- THE PLANNING TEAM WILL USE THE HOTWASH, EVALUATIONS AND EVALUATOR FEEDBACK TO COMPLETE AN AFTER ACTION REPORT.
- THE AFTER ACTION REPORT WILL INCLUDE LESSONS LEARNS AND ACTION STEPS.

OUR ATHLETICS PROGRAM IS ON FIRE

TABLE TOP EXERCISE ACTIVITY

CAPABILITY EVALUATION

OPERATIONAL COORDINATION

ESTABLISH AND MAINTAIN A UNIFIED AND COORDINATED OPERATIONAL STRUCTURE AND PROCESS THAT APPROPRIATELY INTEGRATES ALL CRITICAL STAKEHOLDERS AND SUPPORTS THE EXECUTION OF CORE CAPABILITIES.

OPERATIONAL COMMUNICATIONS

ENSURE THE CAPACITY FOR TIMELY COMMUNICATIONS IN SUPPORT OF SECURITY, SITUATIONAL AWARENESS, AND OPERATIONS BY ANY AND ALL MEANS AVAILABLE, AMONG AND BETWEEN AFFECTED COMMUNITIES IN THE IMPACT AREA AND ALL RESPONSE FORCES.

ECONOMIC RECOVERY

RETURN ECONOMIC AND BUSINESS ACTIVITIES (INCLUDING FOOD AND AGRICULTURE) TO A HEALTHY STATE AND DEVELOP NEW BUSINESS AND EMPLOYMENT OPPORTUNITIES THAT RESULT IN AN ECONOMICALLY VIABLE COMMUNITY.

BACKGROUND

SPRINGFIELD, MISSOURI

- SPRINGFIELD IS LOCATED IN THE HEART OF THE OZARKS.
- THE POPULATION OF THE METROPOLITAN STATISTICAL AREA IS 364,000.
- IT SERVES AS THE REGIONAL HUB FOR ALL OF SOUTHWEST MISSOURI.
- IT IS HOME TO FOUR COLLEGES AND UNIVERSITIES WITH OVER 40,000 STUDENTS.

BACKGROUND

MISSOURI STATE UNIVERSITY

MISSOURI STATE UNIVERSITY (MSU) HAS FOUR MAIN CAMPUSES: SPRINGFIELD, WEST PLAINS, MOUNTAIN GROVE AND DALIAN, CHINA.

THE SPRINGFIELD CAMPUS HAS 24,126 STUDENTS WITH 4,000 LIVING IN ON-CAMPUS STUDENT HOUSING.



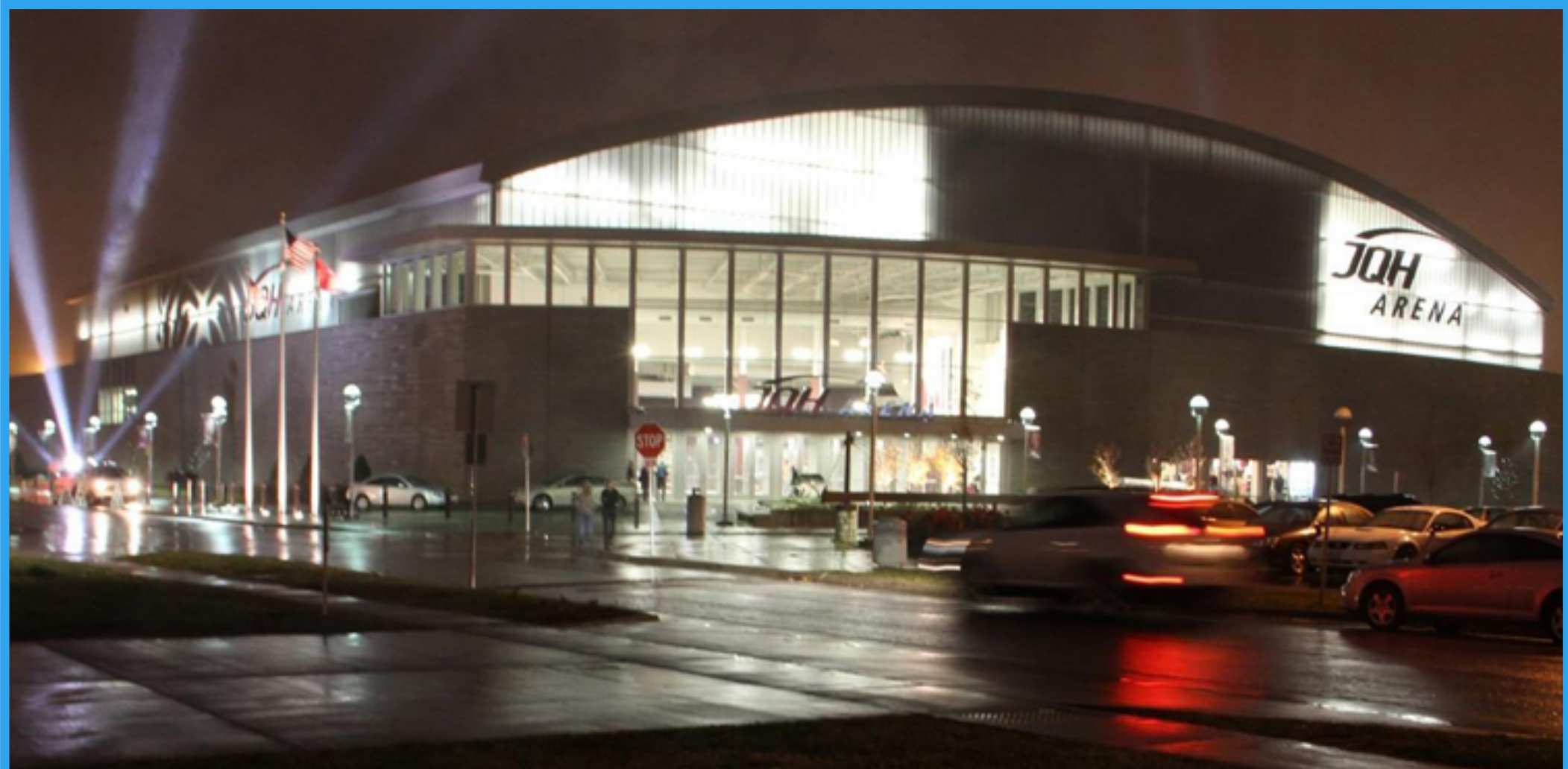
BACKGROUND

ATHLETICS AND EVENTS

- NCAA DIVISION I SCHOOL
- 19 MEN AND WOMEN'S SPORTS PROGRAMS
- FACILITIES:
 - JQH ARENA (BASKETBALL)
 - HAMMONS STUDENT CENTER (VOLLEYBALL, BEACH VOLLEYBALL, SWIMMING AND DIVING)
 - PLASTER SPORTS COMPLEX (FOOTBALL)
 - ALLISON FIELD SOUTH (SOCCER AND TRACK AND FIELD)
 - HAMMONS FIELD (BASEBALL)

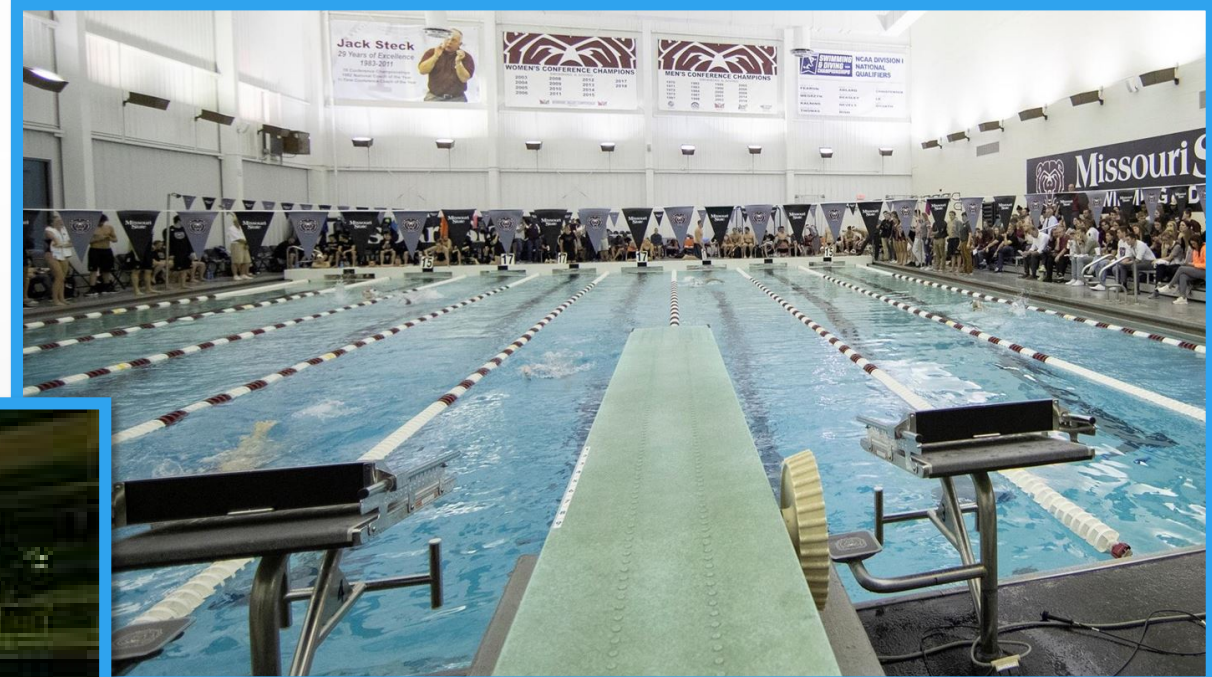
BACKGROUND

JQH ARENA



BACKGROUND

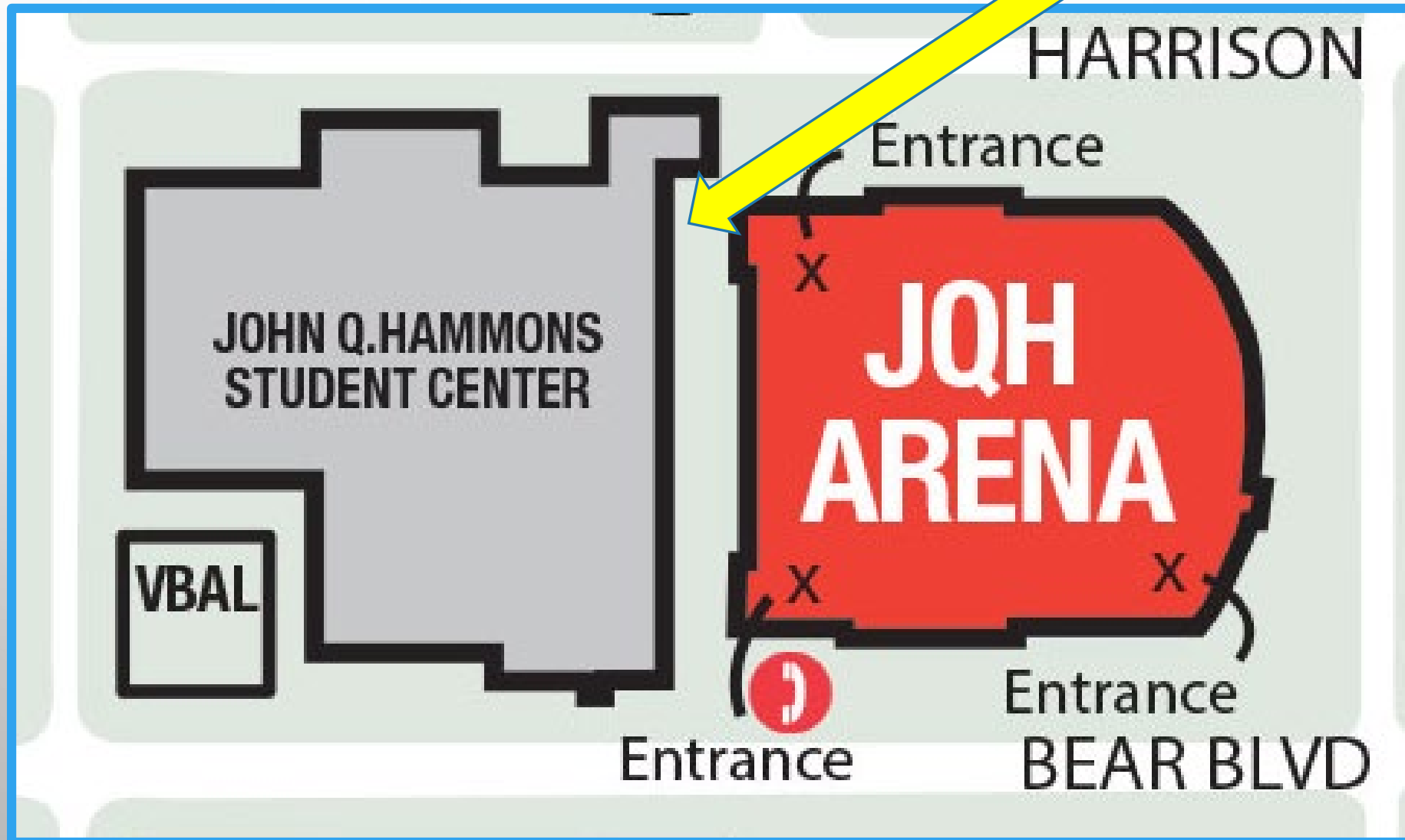
HAMMONS STUDENT CENTER (HSC)



BACKGROUND

Loading Doc and tunnel
connect the two buildings.

THE CONNECTION



THE INCIDENT

FEBRUARY 4, 2020

THE INCIDENT

FEBRUARY 4, 2020

- THE WEATHER HAS BEEN UNSEASONABLY WARM.
- SEVERE THUNDERSTORMS ROLL THROUGH THE AREA AROUND 10:00 P.M.
- FIRE ALARMS IN VARIOUS BUILDINGS COME INTO THE DISPATCH CENTER OVER THE NEXT HOUR.
- EACH IS CHECKED BY CAMPUS SAFETY AND NOTHING IS FOUND.
- REPORT THAT POWER IS OUT IN THE HAMMONS STUDENT CENTER.

THE INCIDENT

FEBRUARY 5, 2020

- AT 2:12 A.M., A FIRE ALARM COMES IN FOR JQH ARENA, SMOKE IN THE LOADING DOCK BETWEEN JQH ARENA AND HAMMONS STUDENT CENTER (HSC).
- AT 2:14 A.M., CAMPUS SAFETY ARRIVES AND FINDS A LIGHT SMOKY HAZE THROUGHOUT THE HSC AND THE FIRE DEPARTMENT IS REQUESTED.
- AT 2:15 A.M., A WATER FLOW ALARM COMES IN FOR JQH ARENA.

THE INCIDENT

FEBRUARY 5, 2020

- AS CAMPUS SAFETY INVESTIGATES THE LOADING DOCK AREA, THEY ARE DRIVEN BACK BY THICK, DARK SMOKING BILLOWING INTO JQH ARENA FROM HSC.
- THE FIRE DEPARTMENT ARRIVES AS FLAMES SHOOT THROUGH THE ROOF OF ONE SECTION OF HSC.
- A SECOND AND THIRD ALARM ARE QUICKLY STRUCK BY THE FIRE DEPARTMENT BRINGING SIGNIFICANT RESOURCES TO THE SCENE.
- TWO HOURS LATER, THE FIRE IS BROUGHT UNDER CONTROL.

DISCUSSION QUESTIONS

4:15 A.M. FEBRUARY 5, 2020

ALL GROUPS

4:15 A.M., FEBRUARY 5, 2020

- WHO WILL BE “IN-CHARGE” AT THE SCENE FOR THE UNIVERSITY?
- WHO WILL PHYSICALLY RESPOND TO THE SCENE?
- ARE THERE ANY COMMUNICATIONS WARRANTED, AND IF SO, TO WHOM?
- WHO WILL BE NOTIFIED WITHIN THE UNIVERSITY AND WHAT IS THE PROCESS FOR NOTIFYING THEM?

THE LIGHT OF DAY

THE LIGHT OF DAY.

9:00 A.M., FEBRUARY 5, 2020

- THE FIRE MARSHAL BELIEVES THE FIRE WAS CAUSED BY A LIGHTENING STRIKE WHERE THE ELECTRICAL FEED ENTERS THE BUILDING.

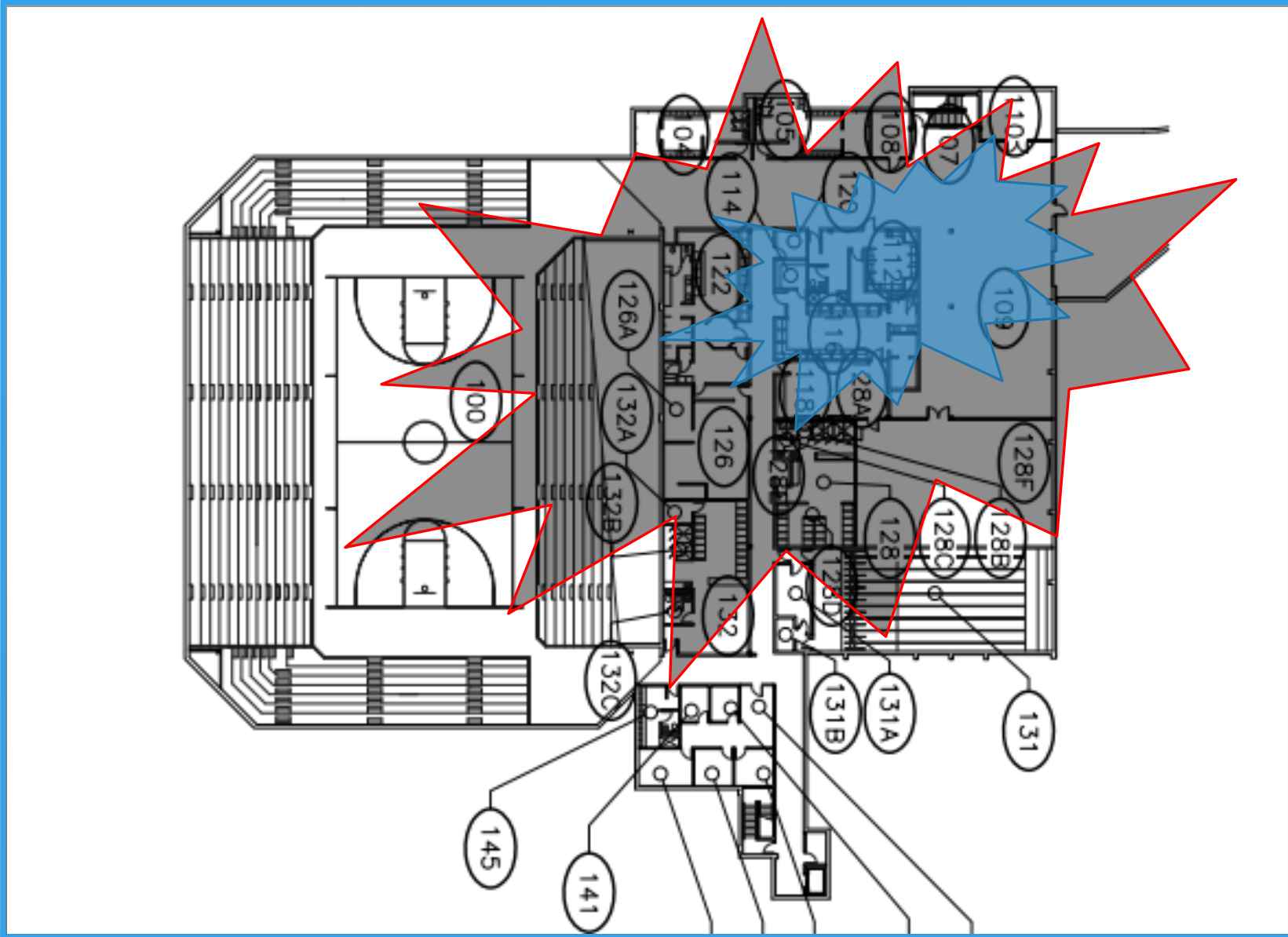
HAMMONS STUDENT CENTER

9:00 A.M., FEBRUARY 5, 2020

- THE FOLLOWING DAMAGE IS REPORTED IN THE HSC:
 - SERIOUS FIRE DAMAGE ON THE EAST END OF THE FIRST FLOOR.
 - THE MAIN ELECTRICAL PANEL IN HSC HAS BEEN DESTROYED.
 - SMOKE DAMAGE THROUGH THE FIRST FLOOR.
 - SMOKE DAMAGE ON THE EAST END OF THE SECOND FLOOR.

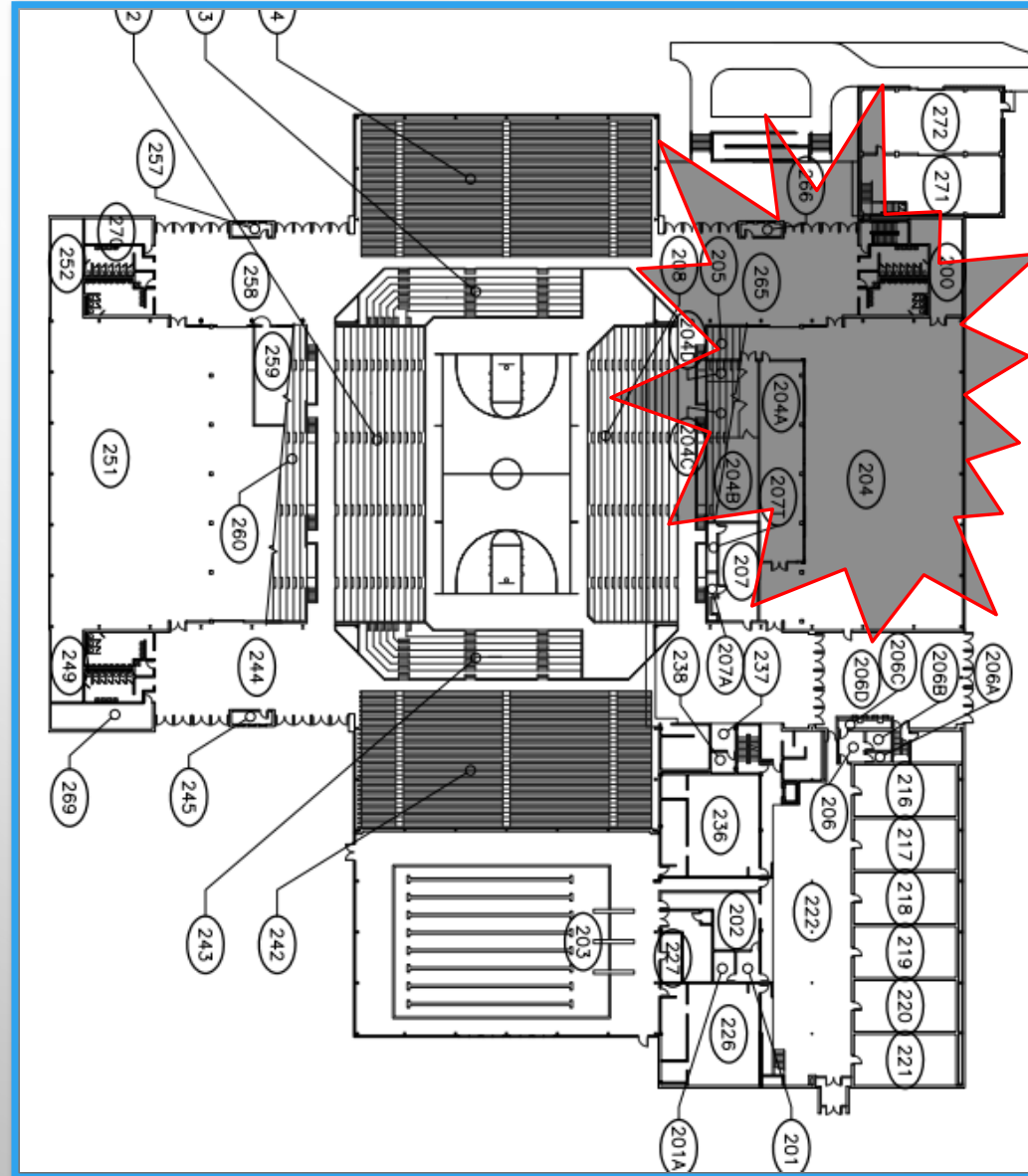
HAMMONS STUDENT CENTER

FIRST FLOOR



HAMMONS STUDENT CENTER

SECOND FLOOR



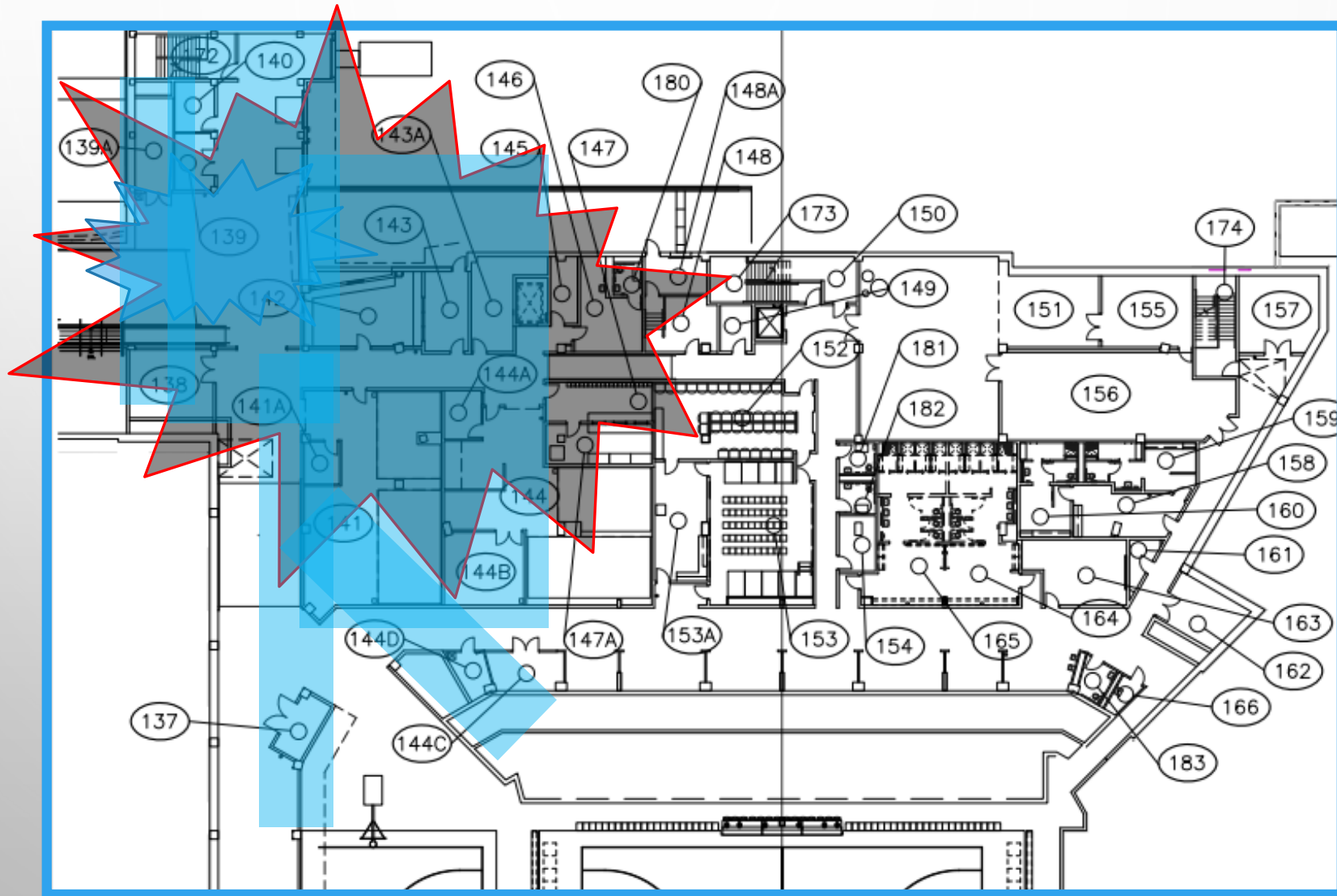
JQH ARENA

9:00 A.M. FEBRUARY 5, 2020

- THE FOLLOWING DAMAGE IS REPORTED IN JQH ARENA:
 - FIRE DAMAGE ON THE LOADING DOCK AREA OF THE FIRST FLOOR.
 - SMOKE DAMAGE ON THE NORTHWEST END OF THE FIRST FLOOR.
 - WATER DAMAGE ON THE NORTHWEST END OF THE FIRST FLOOR.
 - THE MAIN BASKETBALL FLOOR IS COVERED WITH AN INCH OF WATER.

JQH ARENA

FIRST FLOOR



DISCUSSION QUESTIONS

9:00 A.M., FEBRUARY 5, 2020

ALL GROUPS

9:00 A.M. FEBRUARY 5, 2020

- WHAT ORGANIZATIONAL STRUCTURE WILL BE USED TO COORDINATE THE RESPONSE BY THE UNIVERSITY?
- WHAT LEVEL OF INVOLVEMENT DO THE POLICY MAKERS (PRESIDENT, PROVOST, SENIOR VICE PRESIDENTS, ETC) DESIRE?
- WHAT INFORMATION DO POLICY MAKERS WANT TO KNOW?
- WHAT ARE THE TOP FIVE PRIORITIES OF THE UNIVERSITY AT THIS POINT?

REALITY SETS IN

REALITY SETS IN

4:00 P.M. FEBRUARY 5, 2020

- THE FOLLOWING ESTIMATES HAVE BEEN DEVELOPED FOR JQH ARENA
 - 60 DAYS FOR COMPLETE RESTORATION, BUT AREAS NOT IMPACTED BY WATER DAMAGE CAN BE USED IN 30 DAYS.
 - 180 DAYS FOR REPLACEMENT FLOOR TO ARRIVE.
 - \$1,000,000 IN DAMAGES.

REALITY SETS IN

4:00 P.M. FEBRUARY 5, 2020

JQH SPORTS:

- MEN'S BASKETBALL
 - FEBRUARY 12TH
- WOMEN'S BASKETBALL
 - FEBRUARY 15TH
- WOMEN'S BASKETBALL
 - FEBRUARY 27TH
- MEN'S BASKETBALL
 - FEBRUARY 29TH

JQH EVENTS:

- KORN & BREAKING BENJAMIN
 - FEBRUARY 13TH
- JASON ALDEAN
 - FEBRUARY 14TH
- KISS
 - FEBRUARY 18TH
- WINTER JAM
 - MARCH 1ST
- ALAN JACKSON
 - MARCH 27TH

REALITY SETS IN

4:00 P.M. FEBRUARY 5, 2020

- THE FOLLOWING ESTIMATES HAVE BEEN DEVELOPED FOR HSC.
 - 180 DAYS FOR COMPLETE RESTORATION.
 - \$3.8 MILLION IN DAMAGES.
- NO EVENTS ARE SCHEDULED AT THIS TIME.

DISCUSSION QUESTIONS

4:00 P.M., FEBRUARY 5, 2020

POLICY MAKERS

4:00 P.M. FEBRUARY 5, 2020

- WHAT AREAS OF THE INSTITUTION WILL BE INVOLVED IN THIS INCIDENT?
- WHAT IS THE GREATEST RISK TO THE UNIVERSITY DUE TO THIS INCIDENT?
- HOW WILL THE SCHEDULED EVENTS BE HANDLED?
- WHAT ARE YOUR TOP FIVE PRIORITIES AT THIS POINT?

FACILITIES

4:00 P.M. FEBRUARY 5, 2020

- HOW WILL YOU COORDINATE YOUR ACTIONS WITH THE REST OF THE UNIVERSITY?
- WHAT IS THE GREATEST RISK TO THE UNIVERSITY DUE TO THIS INCIDENT?
- WHAT ARE YOUR TOP PRIORITIES AT THIS POINT?

HOTWASH

- WHAT WENT WELL?
- WHAT AREAS COULD WE IMPROVE?
- WHAT GAPS DO YOU SEE?
- WHAT CAN YOU DO TO IMPROVE ON A GAP?

WRAP UP