

MPP Loss Control Workshop

March 4-6, 2020

WHO ARE YOU AND WHY
ARE YOU HERE?

Doug Warthen,
Assistant Director of Facilities Planning & Operations



CONTENT

- Who We Are – Campus Overview
- Visual Feel of Campus and Activities
- Event and Activities Management
 - Internal, External, Student Life, Community Activity
- Construction
 - New Building, Minor Renovations, Vendors
- Public Safety and Facilities
 - Improvements, Resources, Operations
- Questions and Comments

WHO WE ARE

CENTRAL OHIO TECHNICAL COLLEGE AND THE OHIO STATE UNIVERSITY AT NEWARK

- Co-located campus since 1971 (OSU Newark 1968)
- 2-year technical College and a 4-year research University
- Located in Newark, Ohio – 40 northeast of Columbus
- 200 acres of property, 16 buildings, 600,000 square feet of space
- Facilities Department consists of 33 FT, PT and student workers
- 12 additional custodians – contracted services (Goodwill)
- Administrative, Housekeeping, Maintenance, Grounds, Public Safety

Campus Students & Staff

CENTRAL OHIO TECHNICAL COLLEGE AND THE OHIO STATE UNIVERSITY AT NEWARK

- Combined Au 2019 headcount – 6,500
- 70% traditional students, male/female OSU 50/50%, COTC 67/33%
- Fulltime employees
 - OSU 100, COTC 125, Cost-shared 91 (work for both institutions)
- Non-CS Depts. – Exec. Leadership, Academic, Admissions, Advising
- Cost-shared depts. – Facilities, Accounting, Purchasing, Student Life, Financial Aid, Bursar's Office, Other Student Services

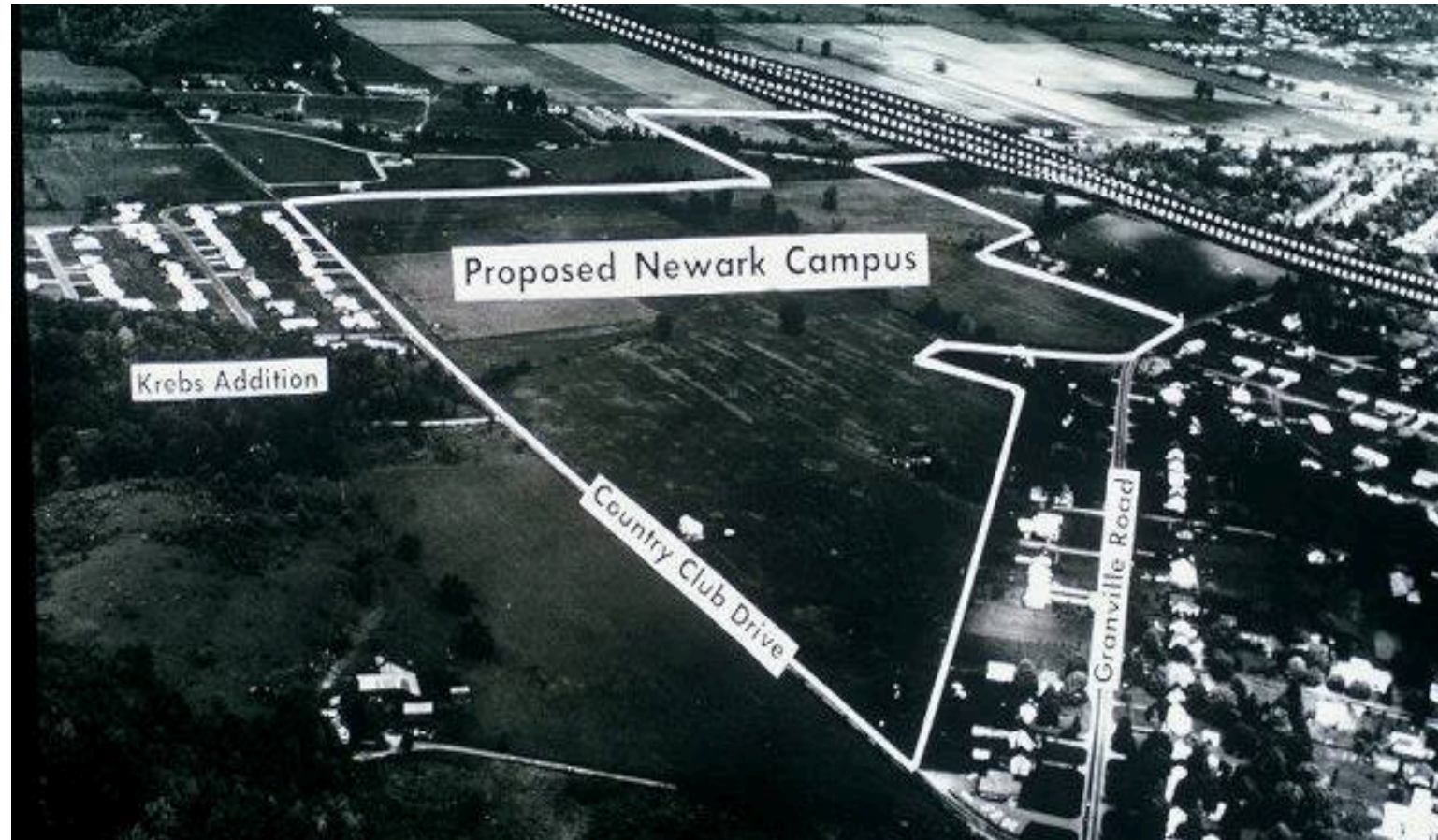
- Newark, OH
- Population 50,000
- 40 miles NE of Columbus



In the beginning...

THE OHIO STATE UNIVERSITY AT NEWARK

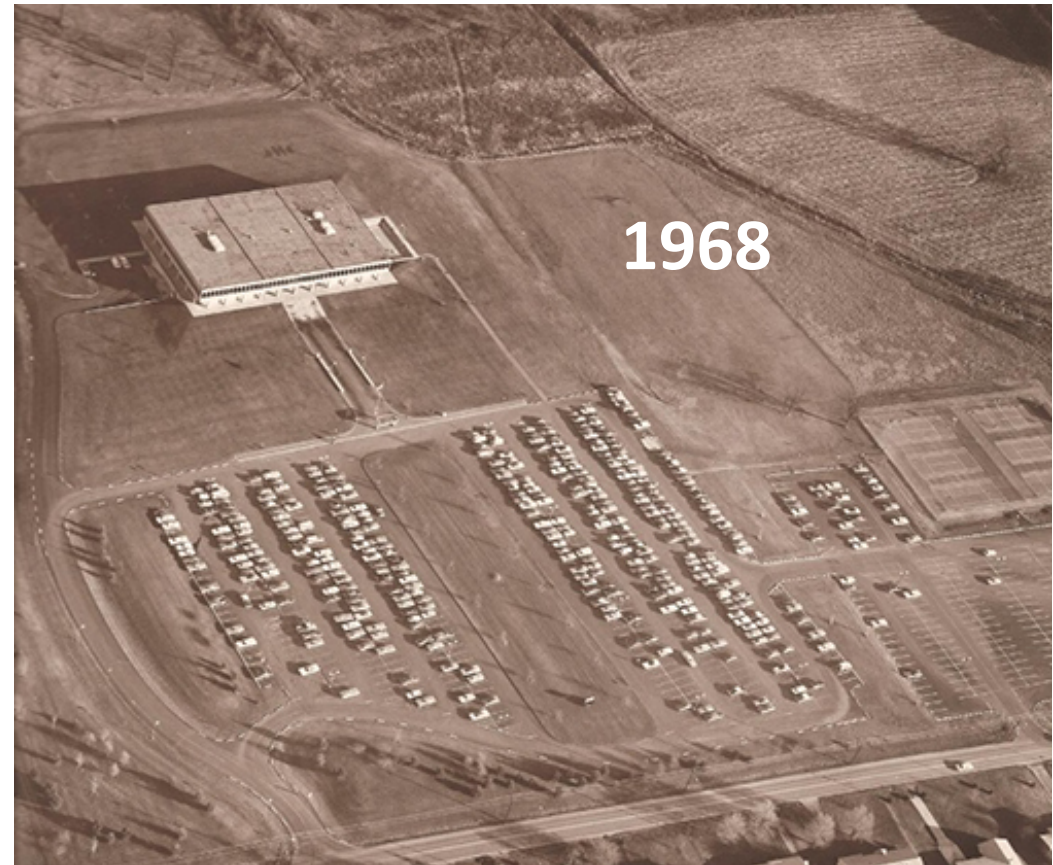
In 1966, seven thousand residents pledged over \$1M toward the cost of land and construction of the first building – Founders Hall



Our Founding Fathers

CENTRAL OHIO TECHNICAL COLLEGE AND THE OHIO STATE UNIVERSITY AT NEWARK

**Howard LeFevre
J Gilbert Reese**





OSU COTC Newark Campus



Lot J



John L. & Christine
Warner Library

Reese Center

The Ohio State
University
at Newark

Central Ohio
Technical
College

Lot C



Newark
League

Valley

Brookside Dr

Country Club Dr

Surrey Dr

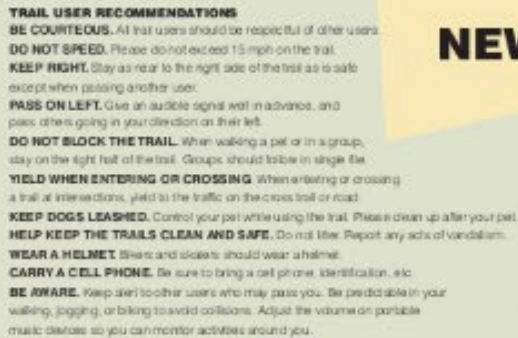
Hilltop Dr

University Dr

Country Club Dr

University Dr

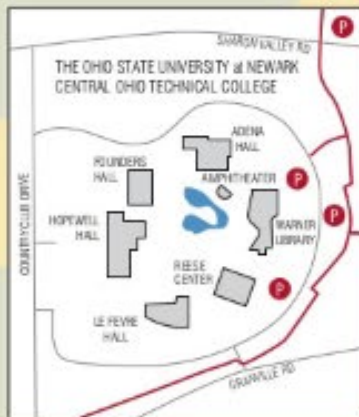
Manville Rd

NEWARK

Village of Alexandria
Blackhand Gorge (ODNR)
Village of Granville
Greater Licking County
Convention & Visitors Bureau
City of Heath
Village of Johnstown
Licking County Park District
Licking County Trails Alliance
City of Newark

www.alcandriash.org
www.dnr.state.oh.us
www.granville.oh.us

www.lccvb.com
www.heathshio.gov
www.villageofjohnstown.org
www.lickingparkdistrid.com
www.lickingcountytaits.com
www.newarkshio.net



Newark Campus 2019



**Alford Center
for Technology
New STEM
Building
\$32M
60,000 sq. ft.**

Residence Halls

McConnell Hall

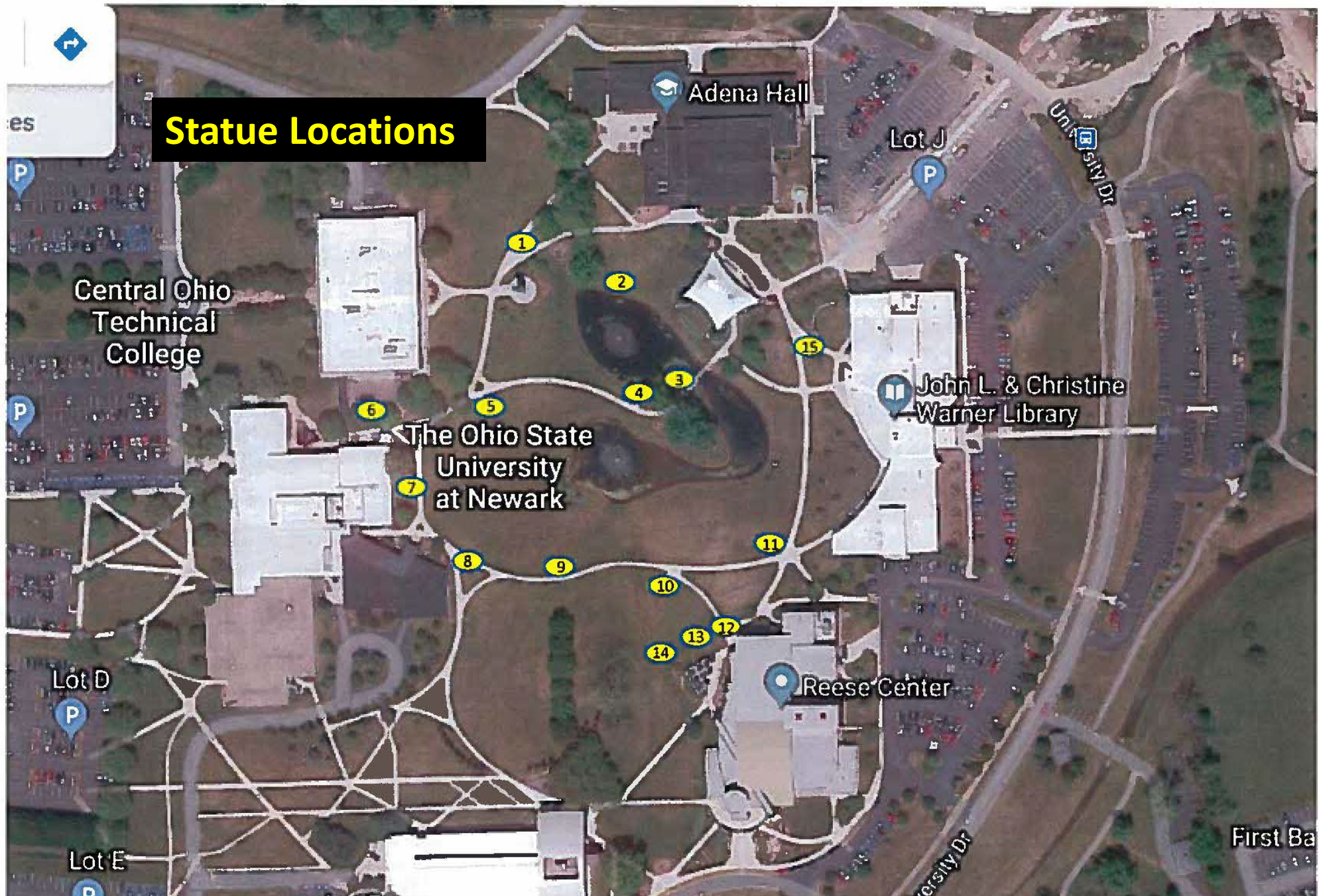
- Newest of three residence buildings
- 310 total beds
- 2 – 6 person layouts
- Kitchenettes
- Direct access to bike path



Campus Sculptures

- 14 sculptures located within the perimeter of the inner campus
- Valued in excess of \$800,000





Charlotte I and II



Events and Activities

Campus and Sponsored Events

- Orientations
- Academic Competitions (LEGO League)
- July 4th Celebration
- Granville Jazz Fest
- Quiz Bowl Competitions
- Buckeye Visit Days
- Workforce Development
- High School Visits
- Student Life Activities
- GOBA Bike Event
- 4H Events

Community and Private Events

- Weddings
- Company Dinners/Annual Meetings
- Chamber of Commerce Events
- Various Meeting Requests
- High School Graduation Ceremonies
- Dance Recitals
- Private Company Trainings
- Symphony Concerts
- Fire Department Trainings
- Political Events
- 5K Races, Heart Foundation Runs, etc.

Events and Activities



Events and Activities



Kid Camp

High School Graduation



PANCAKES FOR PELOTONIA

Saturday, April 20, 8a.m.–noon

John L. and Christine Warner Library and Student Center
1219 University Drive, Newark, Ohio

Pancake breakfast includes pancakes, bacon, fresh fruit salad, juice and coffee. Family-friendly games outside (will be moved indoors in case of rain). **Your donation raises money for cancer research.**

100% of every dollar raised goes directly to cancer research at The Ohio State University Comprehensive Cancer Center – Arthur G. James and Richard J. Solove Research Institute (OSUCCC – James).



THE OHIO STATE UNIVERSITY
NEWARK

Campus Activities



Community Events

Chamber Groundhog
Breakfast



Community Events

GOBA Cycling Event



Event Management

Challenges

- Space Availability
- Internal vs. External
- Evening and weekend events
- Space set-up (custodial staff)
- Inappropriate Use of Space/Resources
- Community Requests for Free Space
- Use of classroom space for events
- Alcohol served at events
- Student Activities

Standard Practice

- Academic use – Class is King
- First come, first served
- Normal 8-5, some flexibility
- Classrooms cannot be reconfigured
- Suggest alternative spaces
- Waiver process
- Catering is prohibited in classroom space
- Required liquor permits, caterer serves
- Informal review to assess risk
 - Release Forms/Waivers Used

Event Management

Facilities Guidelines to reserve space (25Live)

- All requests for space are reviewed and assigned as space allows and in accordance with Campus policies
- Scheduling priority is given to all academic classes and activities, internal/external use for meeting/event space is on a “first come, first served basis”
- All IT Services, catering, and room set-up requirements must be submitted 2 weeks in advance
- Executive leadership reserves the right to cancel or change an event
- If Campus experiences an emergency closing due to weather, utility failure, or other unforeseen disaster, Campus reserves the right to cancel the event or adjust event details accordingly
- It is the requestor’s responsibility to review space confirmation for accuracy of details

Event Management

What We Are Doing:

Events

- Hired an Event Operations Assistant to assist in event coordination, communication and physical room set-up
- Improved communications among space uses and campus departments and requiring event/activities detail prior to space confirmation
- External space requestors are required to complete a detailed event form that includes all the who's, what's where's and how's. These details are reviewed internally for compliance with campus policies and potential conflicts, prior to space confirmation
- Many student activities are informally reviewed by Public Safety/Facilities prior to approval for any risk concerns. Recommendations are made and some activities have been denied.

Current Construction

- Alford Center for Science and Technology
- \$32M Project
- 60,000 Sq. Ft.
- Move-In Summer 2021





Alford Center for Science and Technology

Drone Link

<https://bit.ly/2VhevDV>

Live Stream

<https://newark.osu.edu/live-camera.html>

Current Construction

By [Associated Press](#), Wire Service Content Jan. 17, 2020, at 5:52 p.m.

OSU Student Dies After Apparent Fall at Construction Site

COLUMBUS, OHIO (AP) — Authorities are investigating after an [Ohio](#) State University student was found dead Friday at a construction site on campus.

- Mandated changes on all OSU projects sites with exterior construction fence by January 27, 2020
- Furnish a copy of Site Safety Plan
- Construction fence height required 8' minimum
- Top of fence shall be angled with barbed wire
- Determine how best to secure the upper levels from the ground level – gate or plywood closed and locked after hours
- Estimated monetary effect - \$70,000



What We Are Doing

- **Contractor Management**

- New Builds and Major Renovations are administered by OSU Office of Facilities Operations and Development
- Small projects are administered locally and require:
 - pre-walkthrough to review area, scope of work and adjacent offices
- Public Safety has begun pilot for contractor sign-in, sign-out and issuance of badge ID's
- All projects are monitored by team effort of Facilities Admin, Maintenance and Public Safety
- All contractors must comply with campus policies including parking regulations and tobacco-free campus designation

Facilities/Public Safety Improvements



Charging Station

Emergency Generators



LED Lighting Upgrades to all lots and walks



Facilities/Public Safety Improvements

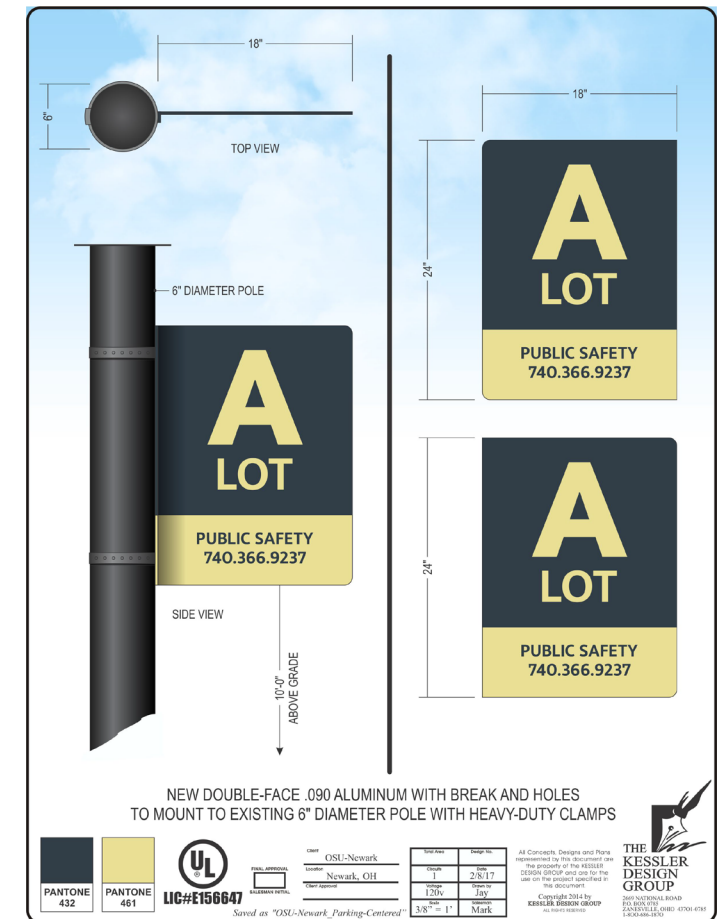
Emergency Door Locks



AEDs



Light Pole Banners



Facilities/Public Safety Improvements

Emergency Escape Chair



No Skateboarding



Emergency Phone



Public Safety Operations

- Public Safety staff
 - OSU Police Sergeant
 - OSU Police Officer
 - 4 Fulltime Security Officers
 - 3 Part-time Security Officers
 - 4 Student Workers
 - 75% Sherriff's Office Coverage
 - Mutual Aid Agreement with Newark Police Department



Public Safety Operations

Camera Upgrades

- 220 High definition cameras



Public Safety Operations



What We Are Doing

- Increased physical presence around campus – uniformed officers, vehicles
- Increased rounds of campus and adjacent properties
 - Rotary Park and bike path
- Campus escort service for students, faculty and staff
- Buckeye Alert – emergency notifications system – text, emails, other.
 - Students, faculty, staff
 - Family, friends, guests eligible to register as well
- Active Aggressor training
- Public Safety Notices

What We Are Doing

See something, say something!
Ask questions.

Questions, Comments?
Thanks You!

Just For Fun





EXPEDITION

MONROE
BODY & DIE CASTING

⚠ DANGER

MONROE SPRE

ABC
America's Body Co.



**NO
FISHING
NO
SWIMMING**



**Simply
Unbelievable**

