

The Postsecondary Outcomes of High School Dual Enrollment Students: A National and State-by-State Analysis

February 6, 2025



Host: Jenny Parks, Vice President, Policy and Research, MHEC



Any resources available will be posted on the MHEC website post-event.



Engage with colleagues in the chat.



Keep your questions in the Q&A!



Please complete our survey.

CCRC Guest Presenters



John Fink
*Senior Research
Associate and
Program Lead*



Tatiana Velasco
*Senior Research
Associate*

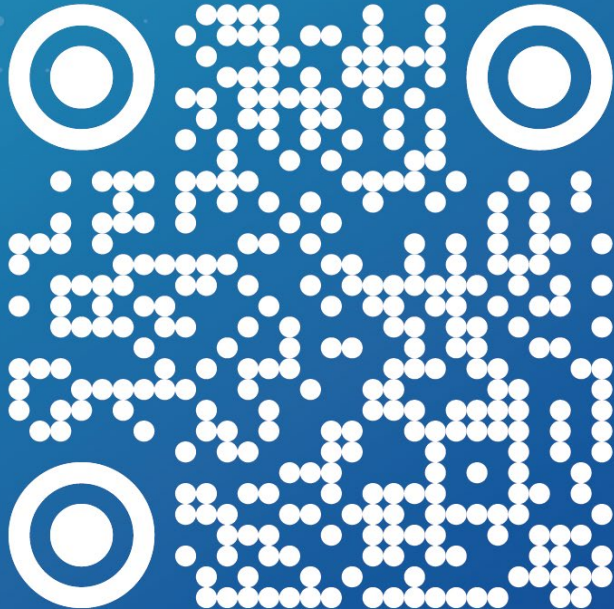


The Postsecondary Outcomes of High School Dual Enrollment Students

A National and State-by-State Analysis

DEEP@CCRC

Resources on dual enrollment equity pathways for K-12 and college practitioners.



CCRC's DEEP Research

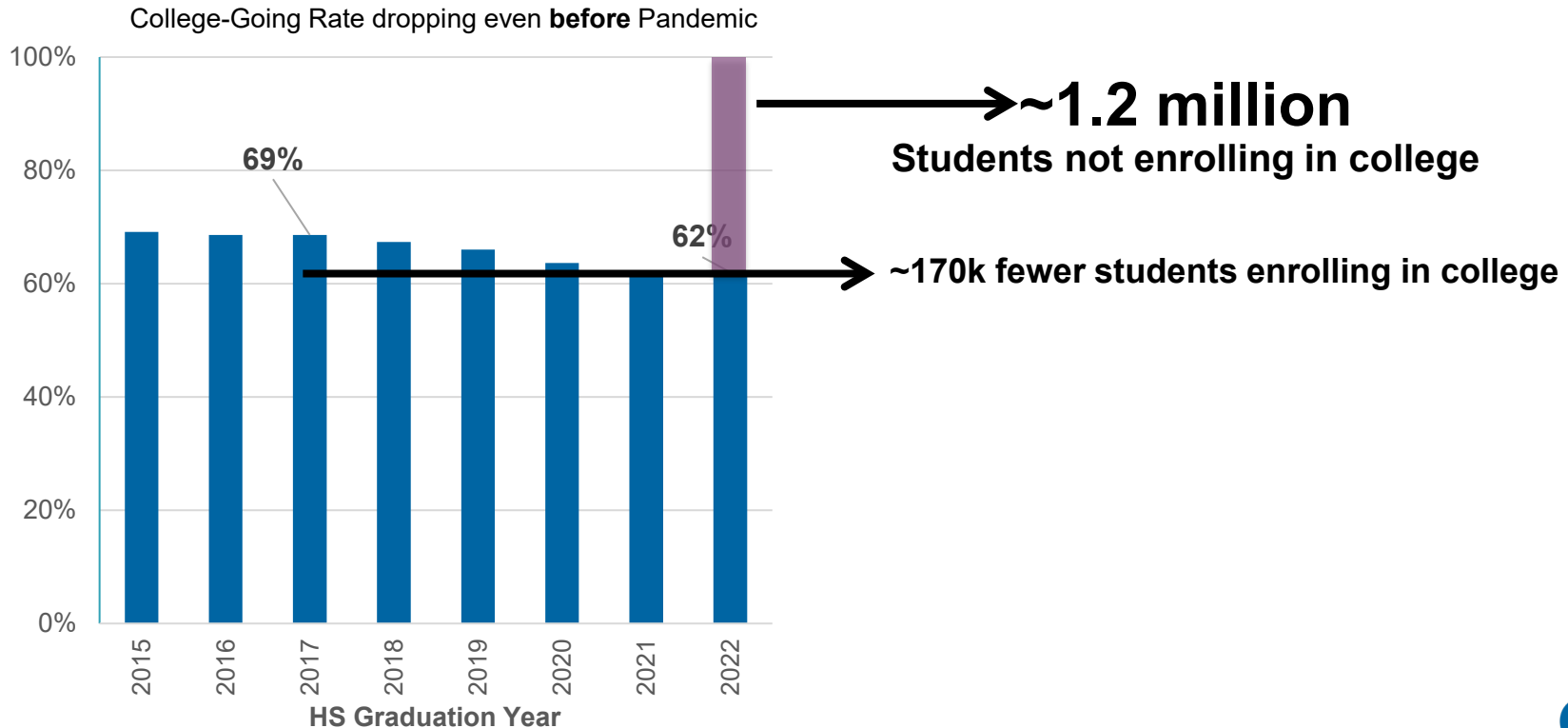
Research-Based Guidance

- Dual Enrollment Playbook (2020)
- Redesigning DE as a Purposeful Pathway (2023)
- How States and Systems Can Support Practitioner Efforts (2024)
- What Do DE Students Want? (2024)
- Postsecondary Outcomes of DE Students (2024)

Data & Inquiry Resources

- Disaggregated DE Data by High School (2021)
- College (2024)
- DEEP Practice Scale of Adoption Assessment (2025)

Challenge and Opportunity: Declining College-Going Rates among HS Graduates

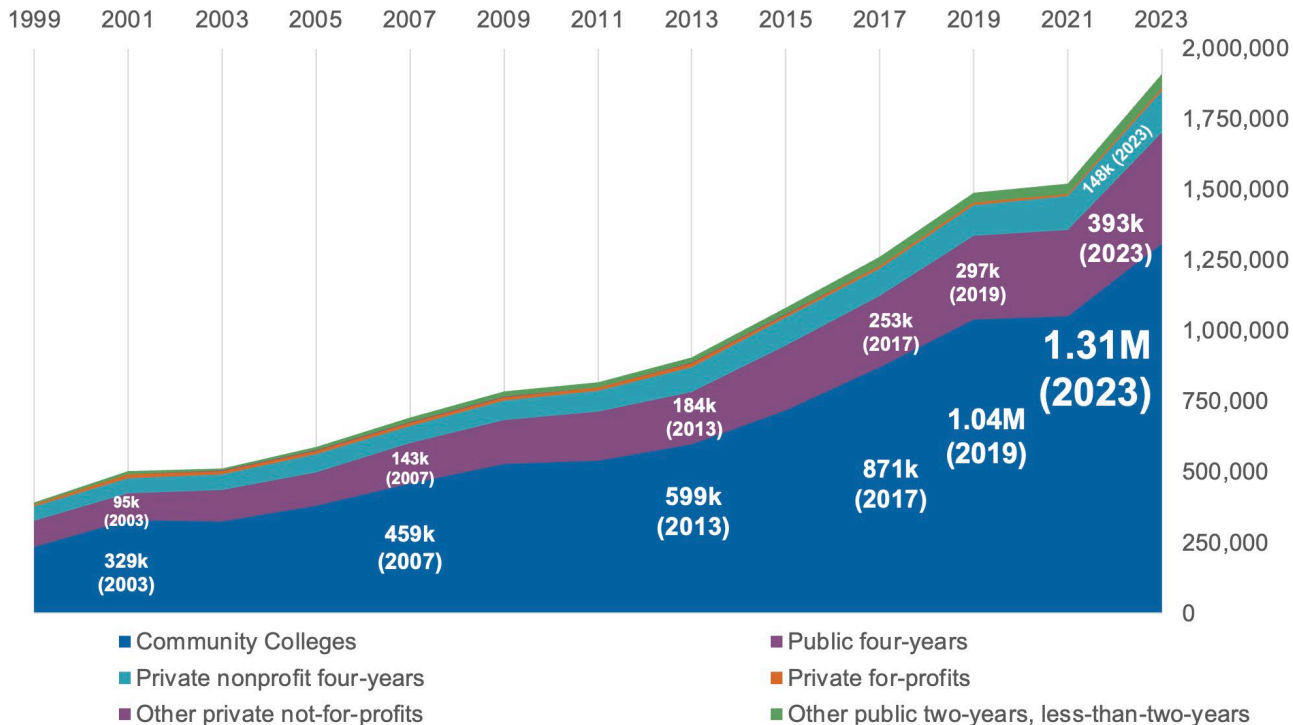


Growth of Dual Enrollment

1999-2023

IPEDS Fall Enrollments

Fall Undergraduate Enrollments among Students Aged 17 or Younger



Expansion of Dual Enrollment Concentrated at Community Colleges

2.5M

2022-23

First Ever Dual Enrollment Count in IPEDS 12-Month Enrollment Survey

Dual Enrollment Counts by Postsecondary Sector in 2022-23

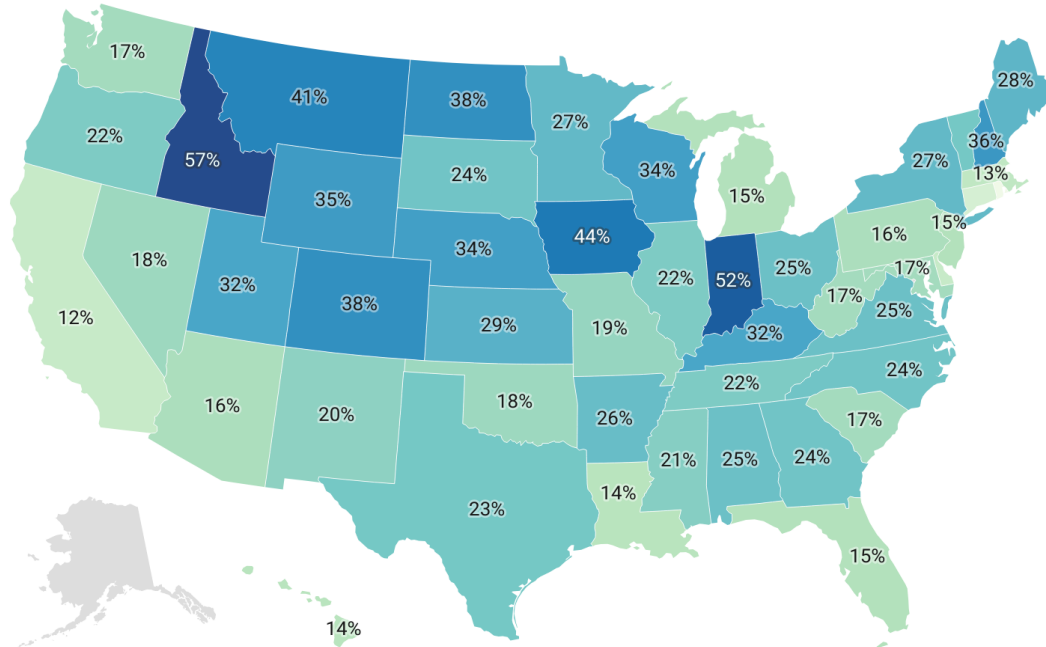
	Dual Enrollment	Total Undergraduate	Percent DE
Total	2,489,859	21,220,413	12
Community colleges	1,784,966	8,618,323	21
Public four-years	445,224	7,121,611	6
Private not-for-profit	207,652	3,504,732	6
Other public two-years, less-than-two-years	46,249	237,969	19
Private for-profits	5,768	1,737,778	0

IPEDS 12-Month Enrollment Survey, 2022-23 Academic Year

<https://ccrc.tc.columbia.edu/easyblog/how-many-students-are-taking-dual-enrollment-courses-in-high-school-new-national-state-and-college-level-data.html>

Percentage of Community College Students in High School in 2022-23

Dual enrollment as a percent of
community college headcount



Created with Datawrapper

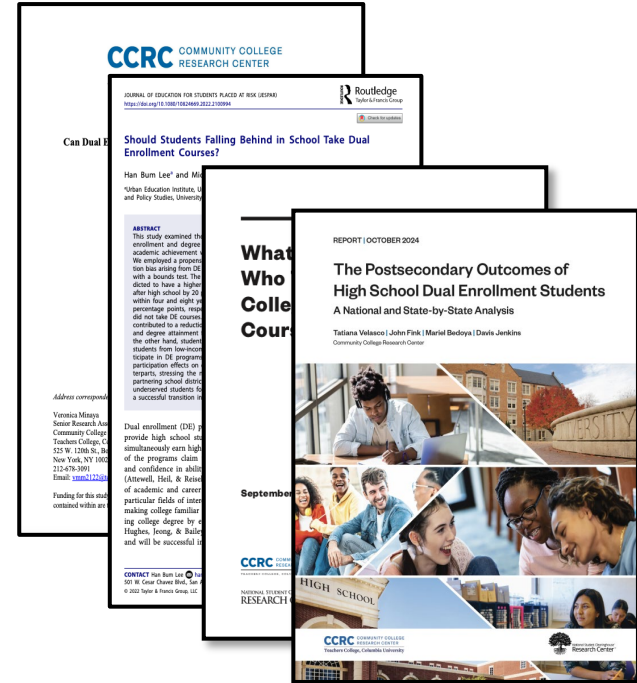
**Dual Enrollment:
21% of 2022-23
Community College
Enrollment**

Evidence on the effects of dual enrollment

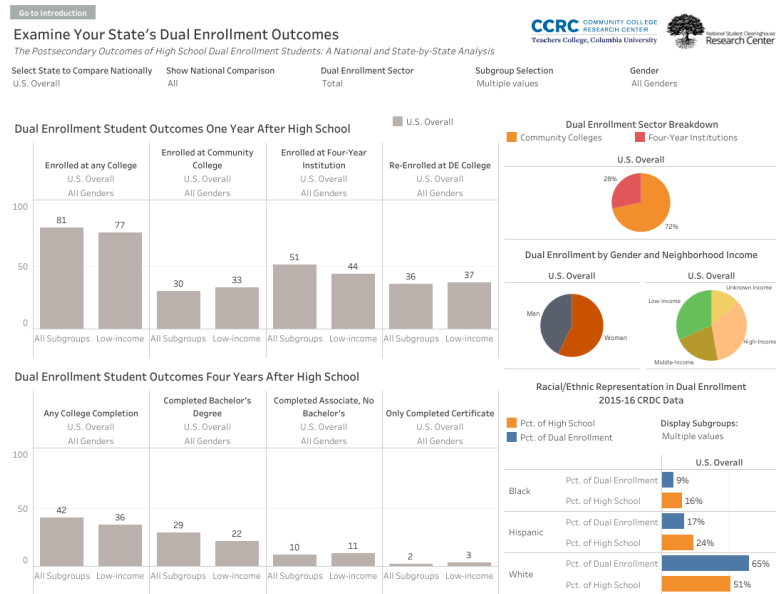
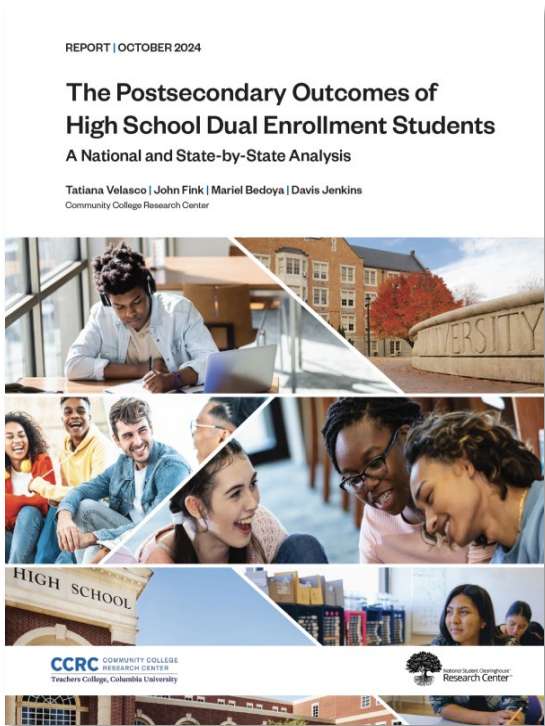
Increasing descriptive and quasi-experimental evidence for dual enrollment

- DE can benefit students who are falling behind in HS (Lee & Villarreal, 2022).
- Increase college application (Liu et al., 2022).
- Boost Black & Hispanic student entrance and persistence in STEM (Minaya, 2021).

Substantial state and institutional variation in post-HS college outcomes among former DE students



We examine national and state-by-state postsecondary outcomes of DE students who started in the fall 2015



Data and Definitions

All college entrants in the fall of 2015:

- ✓ **Dual enrollment (DE) students:** High school students enrolled at a postsecondary institution for the first time ever in fall 2015. 88% were in 11th and 12th grade of high school.
- ✓ **Non-DE students:** High school students enrolled at a postsecondary institution for the first time ever in fall 2015.

- **Enrollment outcomes in students' first year after high school**
 - **DE student enrollment** at a postsecondary institution within the first year post high school
 - **Re-enrolled at DE college:** DE student returned to the DE institution for at least one term during the first year post-high school.
- **Completion outcomes within four years after high school**
 - **College Completion:** DE student completed a postsecondary award within four years post-high school.

Within the first year post high school, 81% of students enrolled at a postsecondary institution.



Four in every five dual enrollment students went directly to college after high school

Within the first year post high school, 81% of students enrolled at a postsecondary institution. 51% enrolled at a four-year institution, and 30% at a community college



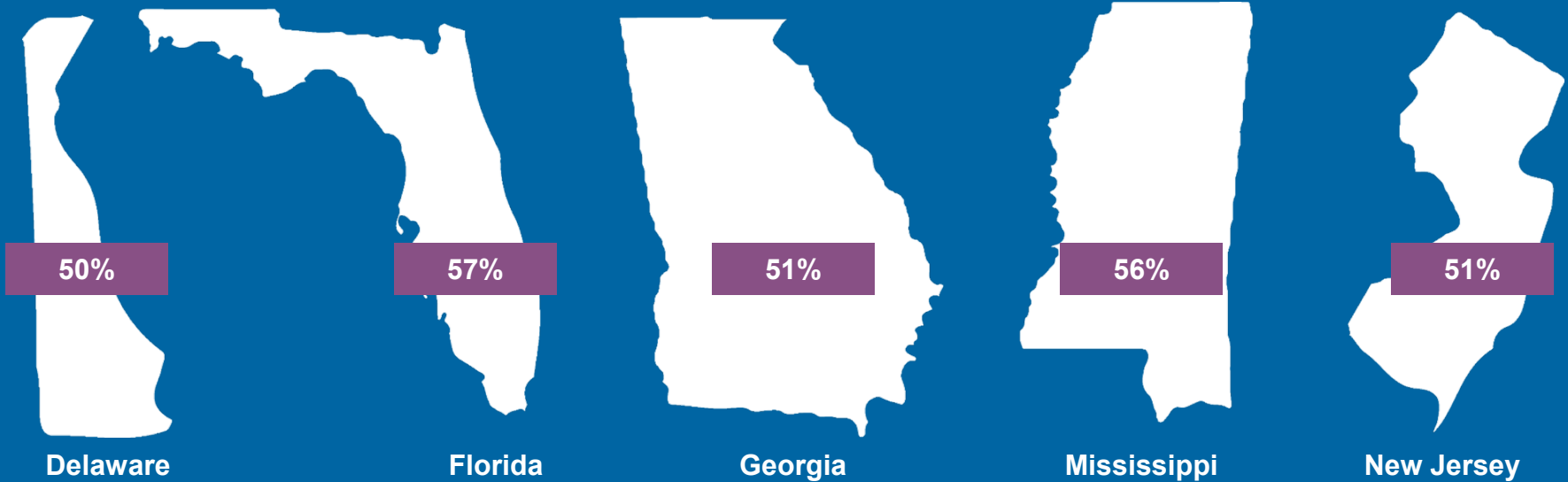
Half of dual enrollment students went directly to a four-year institution.

- ✓ *29% completed a bachelor's*
- ✓ *10% completed an associate*
- ✓ *2% completed a certificate*



42% of dual enrollment students completed a credential within four years after high school

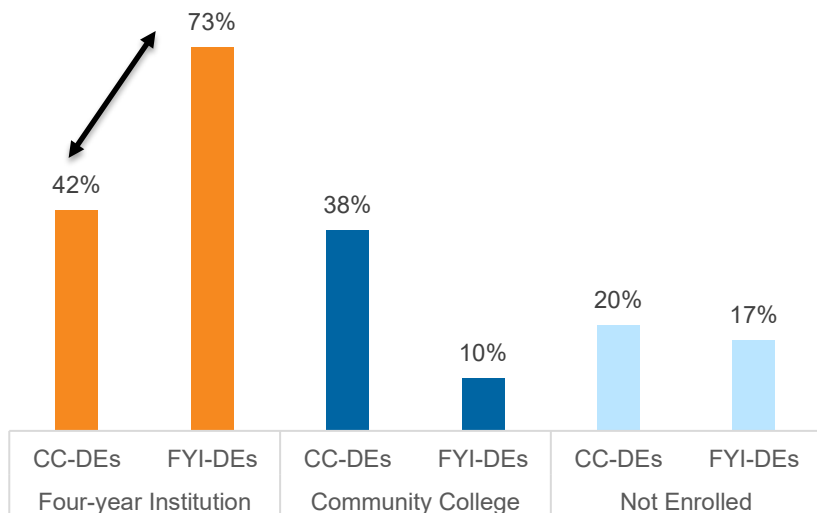
Postsecondary outcomes of dual enrollment students were particularly strong in



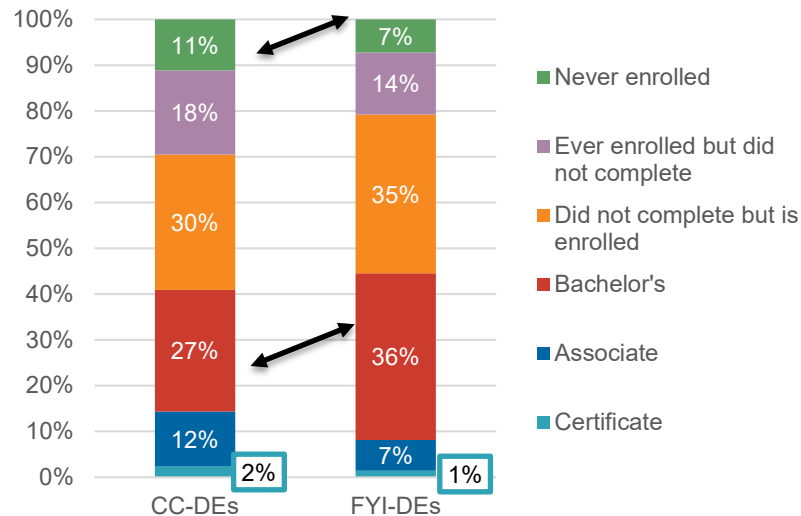
Of DE students completed an award within four years after high school

Four-year Institutions' DEs (FYI-DEs) were more likely to enroll at a four-year and complete a bachelor's degree than community college DEs (CC-DEs).

Postsecondary enrollment (within first year after high school) of DE students, by DE college sector



Highest postsecondary outcome among dual enrollees four years after high school



But Black, Hispanic, and low-income students are severely underrepresented among FYI-DEs

Students who took dual enrollment courses in high school have higher degree completion rates than students who did not



50%

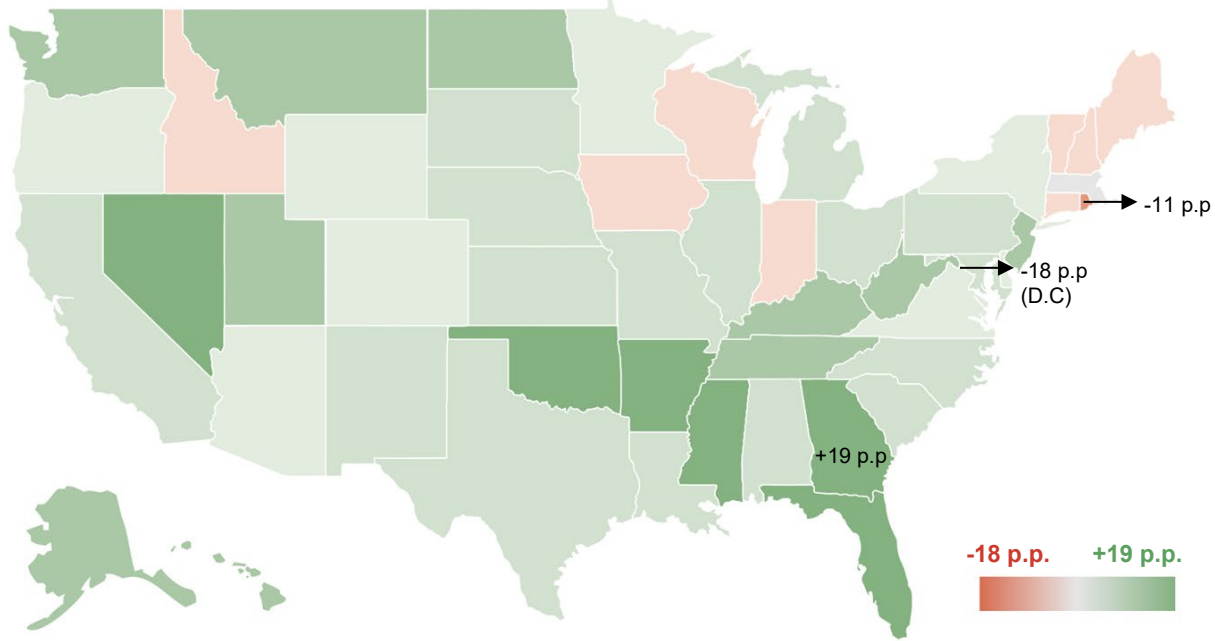
of the DE students who went to college completed a credential within four years



44%

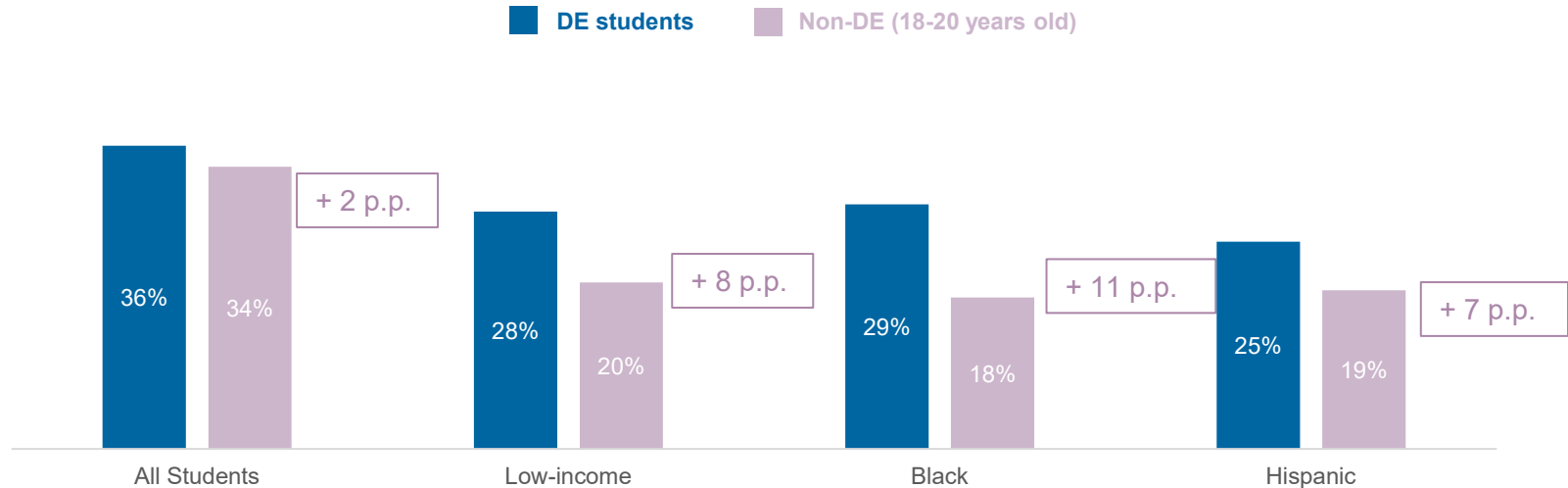
of non-DE students ages 18-20 completed a credential within four years

In 41 states, DE was associated with higher college completion rates, and in 16 states, DE students showed double-digit higher completion rates.



Dual enrollment students enroll and complete college at high rates, but there are gaps in outcomes.

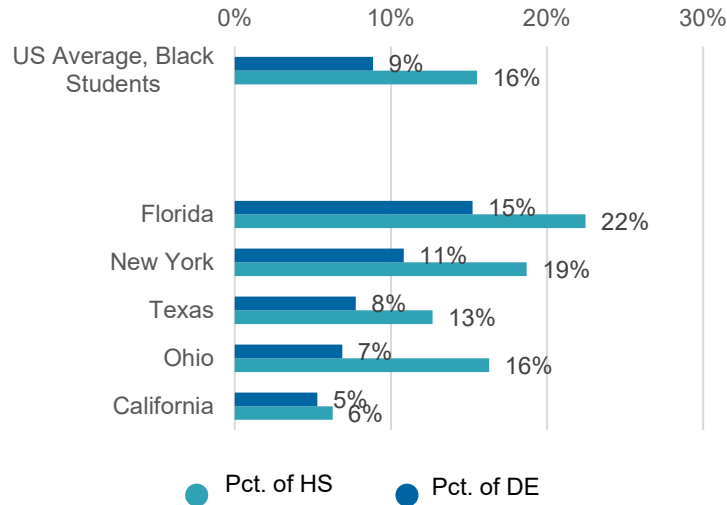
Bachelor's completion rate (within four years) by DE students who enrolled in a college within first year after high school and by non-DE (18–20) students



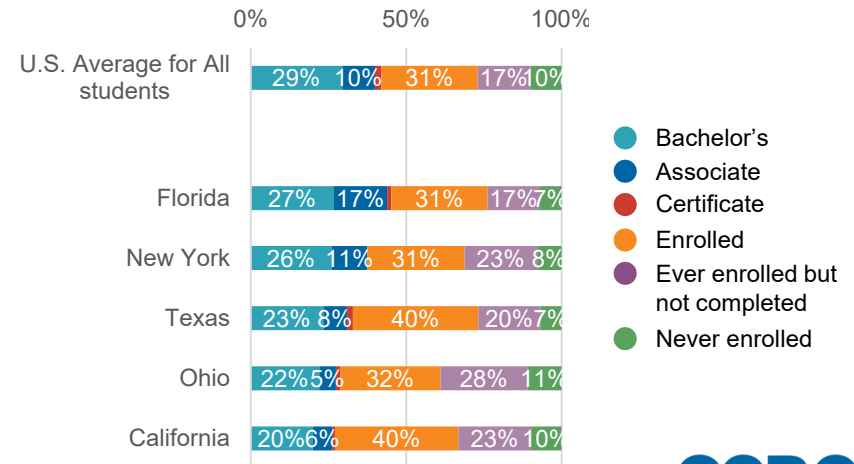
Black students were severely underrepresented among DE students. In over half of states, Black DE students enrolled in postsecondary institutions at higher rates compared to the national DE average.

Access to DE: Black student representation in DE compared to HS enrollment

Civil Rights Data Collection 2015-16 School Year



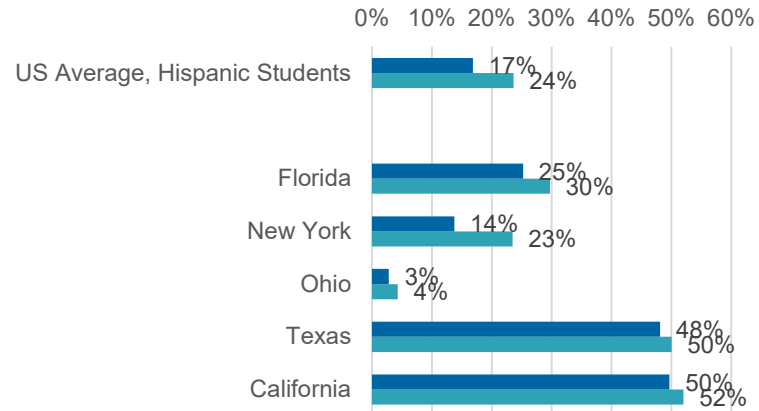
Highest award completed within four-years post high school, Black DE students



Hispanic students are underrepresented in DE in essentially every state, but some states have much stronger outcomes than others.

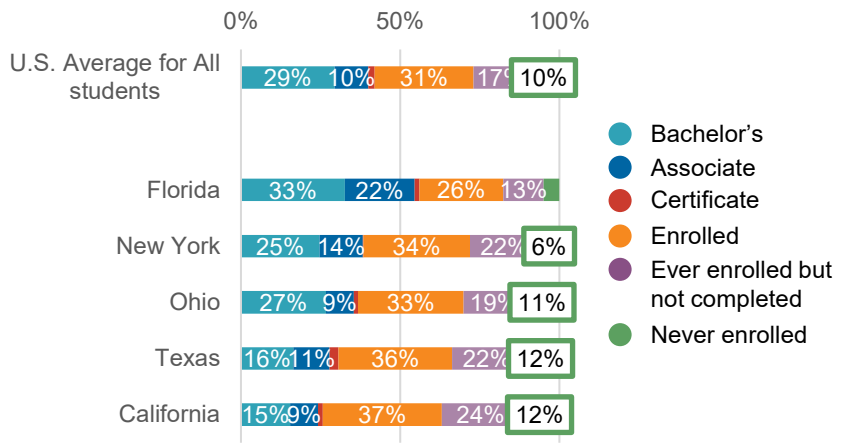
Access to DE: Hispanic student representation in DE compared to HS enrollment

Civil Rights Data Collection 2015-16 School Year



● Pct. of HS ● Pct. of DE

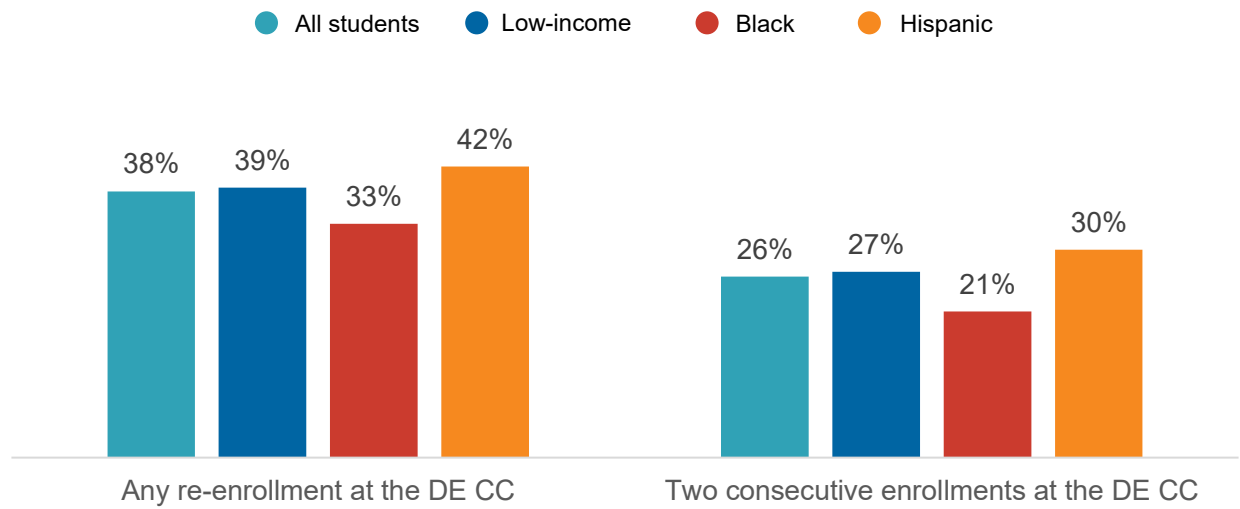
Highest award completed within four-years post high school, Hispanic DE students



- Bachelor's
- Associate
- Certificate
- Enrolled
- Ever enrolled but not completed
- Never enrolled

More than a third of community college dual enrollment students returned for at least one term to the same community college in the first year after high school—and about a quarter enrolled for at least two consecutive terms.

Community college dual enrollees re-enrollment within one year post high school



Data dashboard

Thanks!